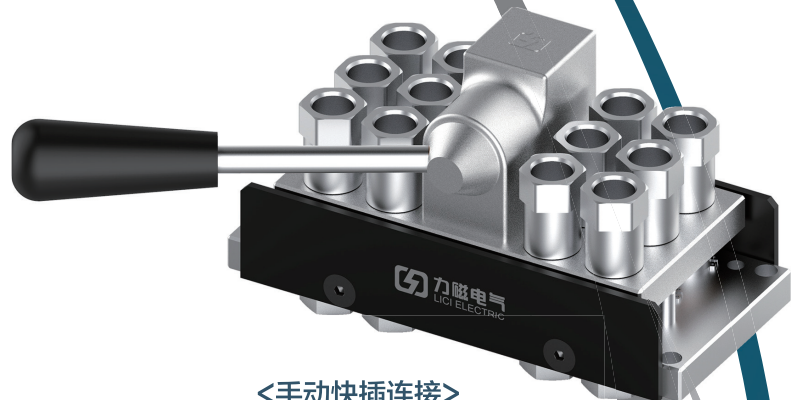


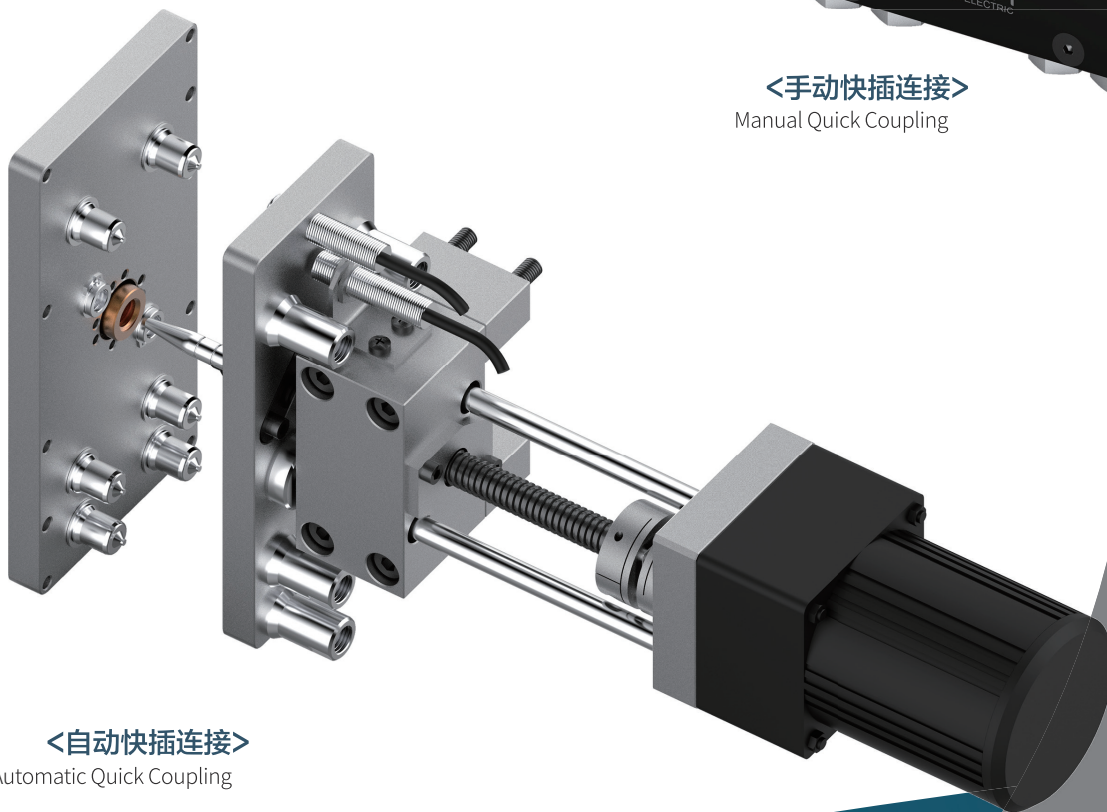
QUICK COUPLING MOUDLE 快插连接系统

快速接头在不使用任何工具的情况下，可以快速、简单、保险地重复连接和断开几乎任何流体或气体管道

Quick connectors can be fast, simple and safe without any tools reconnect and disconnect almost any fluid or gas pipeline



<手动快插连接>
Manual Quick Coupling



<自动快插连接>
Automatic Quick Coupling

H SINGLE PORT QUICK COUPLING 单路快插连接系统

SP快速接头 Type A / SP QUICK COUPLING CONNECTOR TYPE A

最高使用压力 Working pressure	阀门构造 Valve structure	适用流体 Applicable fluids					
1.5~7.5MPa	双路开关型 Two-way shut-off	水 Water	工作油 Hydraulic oil	空气 Air	药品 Chemicals	瓦斯 Gas	蒸汽 Steam

自动返回阀门中心

New self-aligned valve design provides better seal

恢复快速接头内置阀门的形状。即使阀门分离后也可自动复原，单独使用时考虑密封的稳定性。(1~8SP-A型)

The new design of the valve head makes smooth self-aligned return to its original position when socket and plug are disconnected. This mechanism enhances safety sealing of individual socket or plug when disconnected (1 to 8SP-A Type).



- 套筒·插塞同时备有自动开关阀门，防止分离时的液体流出；
Automatic shut-off valves in both socket and plug prevent fluid spill out on disconnection.
- 可应对多种工况，标准化各种主体材质，尺寸，安装形状。
Available in various standard body materials, sizes and end configurations to cope with diversified applications and operating situations.

规格 / Specifications

主体材质/Body material	黄铜/Brass				不锈钢·钢铁(镀处理) Stainless steel, Steel (Plated)			
	R·RC	R·RC	RC	RC	RC	RC	RC	RC
安装螺纹尺寸 Size (Thread)	1/8·1/4 3/8	1/2·3/4 1	1 1/4 1 1/2	2	1/8·1/4 3/8	1/2·3/4 1	1 1/4 1 1/2	2
最高使用压力 Working pressure	5.0 {51}	3.0 {31}	2.0 {21}	1.5 {15}	7.5 {76}	4.5 {46}	3.0 {31}	2.0 {20}
密封材质 Seal material	密封材质 Seal material		表示记号 Mark		使用温度范围 Working temperature range		备注 Remarks	
	丁腈橡胶 Nitrile rubber		NBR (SG)		-20 C ~ +80 C		标准材质 Standard material	
	氟素橡胶 Fluoro rubber		FKM (X-100)		-20 C ~ +180 C			
乙烯橡胶 Ethylene-propylene rubber		EPDM (EPT)		-40 C ~ +150 C				

- 外螺纹型的丁腈橡胶、乙烯橡胶为订购产品。钢铁用的标准密封材质是丁腈橡胶和氟橡胶。
Plugs with male thread end mounting nitrile rubber or ethylene-propylene rubber are made-to-order items. Seal material available for steel body is nitrile and fluoro rubber.

推荐的最大紧固扭矩 / Max. Tightening Torque

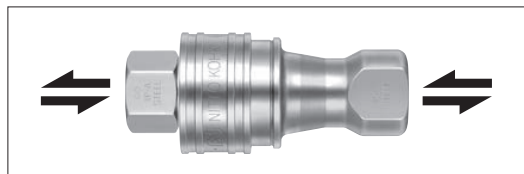
N·m [kgf·cm]

安装螺纹尺寸 Size (Thread)	R1/8 Rc 1/8	R1/4 Rc 1/4	R3/8 Rc 3/8	R1/2 Rc 1/2	R3/4 Rc 3/4	R1 Rc 1	Rc 1 1/4	Rc 1 1/2	Rc 2
扭矩值 Torque	钢铁 Steel	9 {92}	14 {143}	22 {224}	60 {612}	90 {918}	120 {1224}	260 {2652}	500 {5100}
	黄铜 Brass	5 {51}	9 {92}	12 {122}	30 {306}	50 {510}	65 {663}	150 {1530}	260 {2652}
	不锈钢 Stainless steel	9 {92}	14 {143}	22 {224}	60 {612}	90 {918}	120 {1224}	260 {2652}	500 {5100}

- 外螺纹类型只有黄铜。
Plug with male thread type is only available in brass.

流体的流向 / Flow Direction

- 流体可从套筒侧、插塞侧任何一端流入。
Fluid may flow in either direction from plug or from socket side when coupled.



互换性 / Interchangeability

- 尺寸不同则不能连接。与以往型号的SP快速接头(相同尺寸)不能相连接。
*可与SP-V快速接头相连接，但请注意流量。
Different sizes are not interchangeable each other.
Interchangeable with conventional SP Coupla in the same size.
* Interchangeable with SP-V Couplas but take heed of flow rate.

最小断截面积 / Min. Cross-Sectional Area

产品型号 Model	1SP-A	2SP-A	3SP-A	4SP-A	6SP-A	(mm ²)
最小断截面积 Min. Cross-sectional area	14	26	51	73	178	
产品型号 Model	8SP-A	10SP-A	12SP-A	16SP-A		
最小断截面积 Min. Cross-sectional area	229	395	553	803		

连接时的空气混入量 / Admixture of Air on Connection (mL)

产品型号 Model	1SP-A	2SP-A	3SP-A	4SP-A	6SP-A	8SP-A	10SP-A	12SP-A	16SP-A
空气混入量 Volume of air admixture	0.6	1.1	2.7	3.9	11	25	29	45	84

● 因使用条件而各异。Varied according to conditions of use

真空用途适用性 / Suitability for Vacuum

1.3×10⁻¹ Pa [1×10⁻³ mmHg]

套筒单独使用时 Socket only	插塞单独使用时 Plug only	连接时 When connected
-	-	可使用 Operational

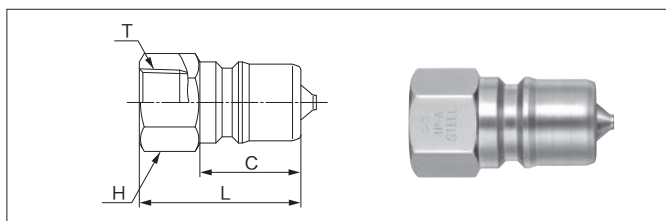
分离时的液体泄漏量 / Volume of Spillage per Disconnection (mL)

产品型号 Model	1SP-A	2SP-A	3SP-A	4SP-A	6SP-A	8SP-A	10SP-A	12SP-A	16SP-A
液体泄漏量 Volume of spillage	0.4	0.8	2.1	3.4	9.5	15	29	45	84

● 因使用条件而各异。
Varied according to conditions of use

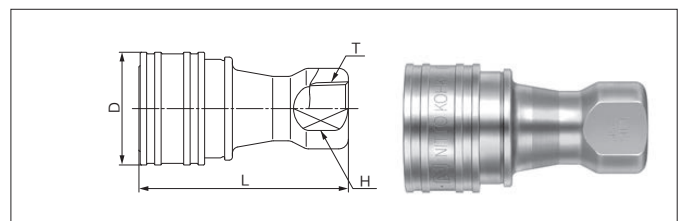
产品型号、尺寸表 / MODELS AND DIMENSIONS

插塞 / 外螺纹安装用 Plug / Female thread



型号 Model	匹配的 螺纹尺寸 Application	质量 (g) Mass			尺寸 (mm) Dimensions			
		钢铁 Steel	黄铜 Brass	不锈钢 stainless steel	L	C	H	T
1P-A	R 1/8	17(※1)	19	17	29	19	六角14	Rc 1/8
2P-A	R 1/4	32	34	32	36	22	六角17	Rc 1/4
3P-A	R 3/8	56	61	56	40	25	六角21	Rc 3/8
4P-A	R 1/2	112	121	112	44	28	六角29	Rc 1/2
6P-A	R 3/4	190	205	190	52	36	六角35	Rc 3/4
8P-A	R 1	311	333	310	62	40	六角41	Rc 1
10P-A	R 1 1/4	590	630	620	70	45	六角54(※2)	Rc 1 1/4
12P-A	R 1 1/2	870	920	880	75	49	六角63(※3)	Rc 1 1/2
16P-A	R 2	1540	1640	1560	80	52	二面77×Φ84	Rc 2

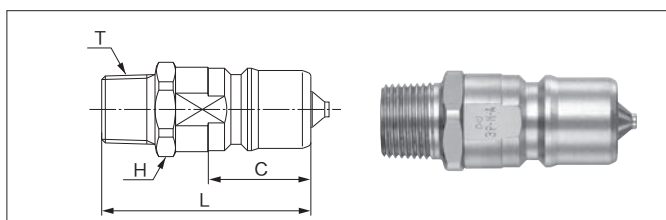
套筒 / 外螺纹安装用 Socket / Female thread



型号 Model	匹配的 螺纹尺寸 Application	质量 (g) Mass			尺寸 (mm) Dimensions			
		钢铁 Steel	黄铜 Brass	不锈钢 stainless steel	L	ΦD	H	T
1S-A	R 1/8	73(※1)	79	75	48	24	二面14	Rc 1/8
2S-A	R 1/4	119	128	130	58	28	二面19	Rc 1/4
3S-A	R 3/8	187	202	193	65	35	二面21	Rc 3/8
4S-A	R 1/2	368	397	391	72	45	二面29	Rc 1/2
6S-A	R 3/4	639	686	645	88	55	二面35	Rc 3/4
8S-A	R 1	951	1024	962	102	65	二面41	Rc 1
10S-A	R 1 1/4	1430	1520	1440	115	77	二面54	Rc 1 1/4
12S-A	R 1 1/2	2130	2270	2150	124	88	二面63	Rc 1 1/2
16S-A	R 2	3280	3510	3310	132	108	二面77	Rc 2

● 图片为钢铁制。(※1) 1P-A (钢铁制) 以及1S-A (钢铁制) 为订购产品。(※2) 不锈钢制为二面54×Φ59。(※3) 不锈钢制为二面63×Φ67。
The photos above show steel coupling. • The appearance of stainless steel coupling (SUS304) differs slightly from that shown in the photos above.

插塞 / 内螺纹安装用 Plug / Female thread

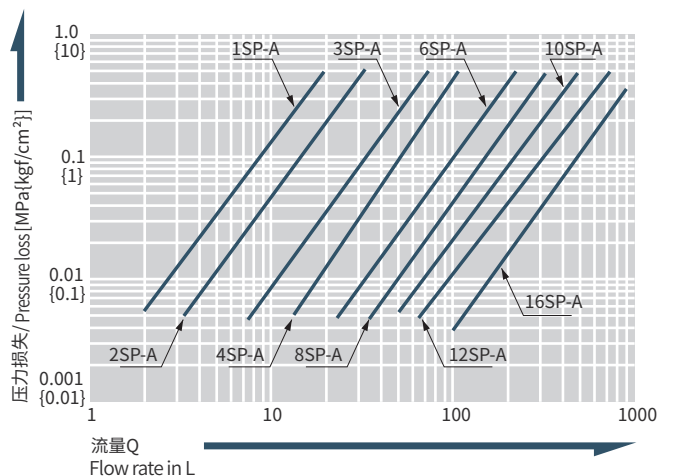


型号 Model	匹配的 螺纹尺寸 Application	质量 (g) Mass	尺寸 (mm) Dimensions			
		黄铜 Brass	L	C	H	T
1P-M-A	R 1/8	24	(40)	19	六角14	Rc 1/8
2P-M-A	R 1/4	41	(44)	22	六角17	Rc 1/4
3P-M-A	R 3/8	71	(51)	25	六角21	Rc 3/8
4P-M-A	R 1/2	149	(62)	28	六角27	Rc 1/2
6P-M-A	R 3/4	295	(75)	36	六角35	Rc 3/4
8P-M-A	R 1	406	(83)	40(※4)	六角41	Rc 1

● (※4) 8P-M-A型外观照片无差异。为此, 显示为大约插入长度。
Model 8P-M-A indicates an approximate insertion length because there is no difference in level on the body.

流量 / 压力损失特性图 Flow Rate/Pressure Loss Characteristics

[测定条件] ● 流体名称: 水 ● 温度: 25°C ± 5°C
[Test conditions] Fluid : Water Temperature



HSP 快速接头 / HSP QUICK COUPLING CONNECTOR

14.0~20.6MPa {142~210kgf/cm²} 油压用 / Hydraulic pressure

最高使用压力
Working pressure



14.0~20.6MPa

阀门构造
Valve structure



双路开关型
Two-way shut-off

适用流体
Applicable fluids



工作油
Hydraulic oil



锥形外螺纹型
Male tapered thread

平行外螺纹型
Male parallel thread

主体材质采用耐振动耐冲击性能好的特殊钢。
有外螺纹型和内螺纹型,压力损失少,
适用于油压机器。

Special steel body is tough against vibration and impact! Male and female thread end configurations are available.
Low pressure loss characteristic suits hydraulic equipment applications.

- 快速接头主体采用经热处理的特殊钢。尤其在抗冲击压方面性能优异;
Quenched special steel body!
Powerful impact resistance, especially against impulses.
- 套筒、插塞皆装有自动开关阀门,防止分离时流体的流出,另外,操作简易;
Automatic shut-off valves in both socket and plug prevent fluid spill out on disconnection. Easy to handle.
- 产品类型除内螺纹型之外,还有外螺纹型(锥形螺纹、平行螺纹外凸端口、平行螺纹内凹端口)。尤其是外螺纹,可提高安装于油压装置的作业效率。



PL型(带罩子)
PL type (safety sleeve lock type)



实施热处理以专门应对冲击压力

The body material is quenched to cope especially with impulses

套筒、插塞皆有内置阀门阀门构造因尺寸而异

Both socket and plug have built-in automatic shut-off valves. Valve design differs depending on sizes. The photo is for 6HS & 6HP

主体材质采用特殊钢 Body is made of special steel

安装尺寸多样 Various end configurations

锥形内螺纹型
Female tapered thread

规格 / Specifications

主体材质/Body material	特殊钢 (镀处理) / Special steel (Plated)			
安装螺纹尺寸 Size (Thread)	R1/4 ~ R3/4, Rc1/4 ~ Rc1, G1/4 ~ G3/4	Rc1 1/4 · Rc1 1/2	Rc2	
最高使用压力 Working pressure	20.6 {210}	18.0 {183}	14.0 {142}	
密封材质 Seal material	密封材质 Seal material	表示记号 Mark	使用温度范围 Working temperature range	备注 Remarks
	丁腈橡胶 Nitrile rubber	NBR (SG)	-20 C ~ +80 C	标准材质 Standard material
使用温度范围 Working temperature range	氟素橡胶 Fluoro rubber	FKM (X-100)	-20 C ~ +180 C	准标准品 Available on request

流体的流向 / Flow Direction

- 流体可从套筒侧、插塞侧任一端流入。
Fluid may flow in either direction from plug or from socket side when coupled.



推荐的最大紧固扭矩 / Max. Tightening Torque N·m (kgf·cm)

安装螺纹尺寸 Size (Thread)	R1/4 Rc 1/4 G 1/4	R3/8 Rc 3/8 G 3/8	R1/2 Rc 1/2 G 1/2	R3/4 Rc 3/4 G 3/4	Rc 1	Rc 1 1/4	Rc 1 1/2	Rc 2
内螺纹 Female thread	28 {286}	45 {459}	90 {918}	100 {1020}	180 {1836}	290 {2958}	350 {3570}	500 {5100}
外螺纹(锥形) Male taper thread	28 {286}	45 {459}	90 {918}	100 {1020}	-	-	-	-
外螺纹(平行) Parallel male thread	25 {255}	35 {357}	60 {612}	120 {1224}	-	-	-	-

最小断截面积 / Min. Cross-Sectional Area (mm²)

产品型号 Model	2HSP	3HSP	4HSP	6HSP	66HSP	8HSP	10HSP	12HSP	16HSP
最小断截面积 Min. cross-sectional area	21	37	77	77	145	203	595	595	1084

连接时的空气混入量 / Suitability for Vacuum 1.3×10⁻¹Pa {1×10⁻³mmHg}

套筒单独使用时 Socket only	插塞单独使用时 Plug only	连接时 When connected
-	-	可使用 Operational

连接时的空气混入量 / Admixture of Air on Connection (mL)

产品型号 Model	2HSP	3HSP	4HSP	6HSP	66HSP	8HSP	10HSP	12HSP	16HSP
空气混入量 Volume of air	0.7	1.9	3.5	3.5	8.2	12.4	44	44	156

- 因使用条件而各异。Varied according to conditions of use

使用须知 Precautions for use

- 虽然也存在与“210快速接头”、“280快速接头”相近的尺寸,但并无互换性,因此请勿连接。
There is no interchangeability between HSP Coupla and 210 Coupla or 280 Coupla. Do not connect to each other even if sizes are similar.

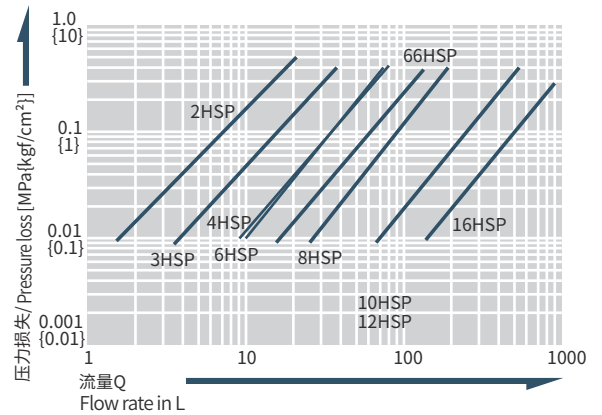
互换性 / models and dimensions

- 可与(4HSP和6HSP)以及(10HSP和12HSP)相连接。
但是除了这两种组合外,如果尺寸不同就不能连接。

The photos above show steel coupling. The appearance of stainless steel coupling (SUS304) differs slightly from that shown in the photos above.

流量 / 压力损失特性图 Flow Rate/Pressure Loss Characteristics

- [测定条件]** ● 流体名称:工作油 ● 温度:30°C±5°C
[Test conditions] Fluid : Hydraulic oil Temperature
- 动黏度:32×10⁻⁶m²/s ● 密度:0.87×10³kg/m³
Fluid viscosity Density

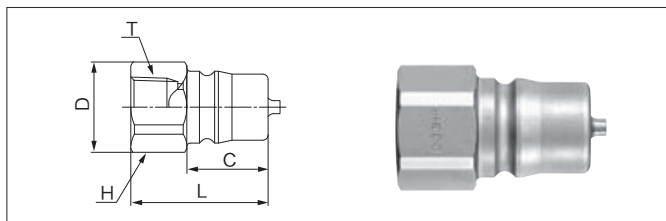


- 外螺纹型与内螺纹型(使用了转换接套时)比较,流量提高5-10%。
The flow volume of male thread type is increased by 5 to 10% compared with that of female thread type with conversion nipple.

产品型号、尺寸表 / MODELS AND DIMENSIONS

插塞 / HP型(外螺纹安装用,锥形螺纹)

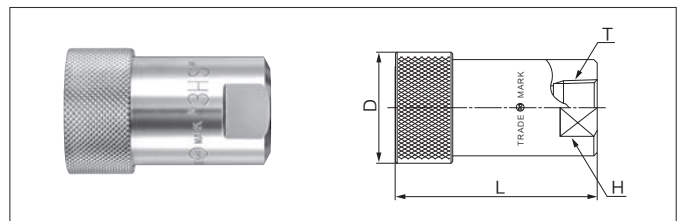
Plug / HP type (Female tapered thread)



型号 Model	匹配的 螺纹尺寸 Application	质量 (g) Mass	尺寸 (mm) Dimensions				
			L	ΦD	C	H	T
2HP	R 1/4	40	32	20.5	17.5	六角(Hex.)19	Rc 1/4
3HP	R 3/8	68	38	25	22.5	六角(Hex.)23	Rc 3/8
4HP	R 1/2	124	44	32	27.5	六角(Hex.)29	Rc 1/2
6HP	R 3/4	148	50	35	27.5	六角(Hex.)32	Rc 3/4
66HP	R 3/4	232	51	40	28	二面35	Rc 3/4
8HP	R 1	361	61	47	36	二面41	Rc 1
10HP	R 1 1/4	886	80	64	58	二面58	Rc 1 1/4
12HP	R 1 1/2	810	80	64	58	二面58	Rc 1 1/2
16HP	R 2	3,307	115	100	83	二面90	Rc 2

套筒 / HS型(外螺纹安装用,锥形螺纹)

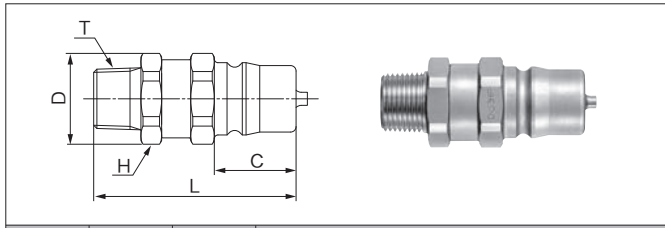
Socket / HS type (Female tapered thread)



型号 Model	匹配的 螺纹尺寸 Application	质量 (g) Mass	尺寸 (mm) Dimensions			
			L	ΦD	H	T
2HS	R 1/4	134	49	(27.5)	二面19	Rc 1/4
3HS	R 3/8	226	60	(33)	二面23	Rc 3/8
4HS	R 1/2	485	72	(43)	二面35	Rc 1/2
6HS	R 3/4	460	72	(43)	二面35	Rc 3/4
66HS	R 3/4	569	78.5	(47)	二面35	Rc 3/4
8HS	R 1	1,042	93	(58)	二面46	Rc 1
10HS	R 1 1/4	2,586	138	87	二面58	Rc 1 1/4
12HS	R 1 1/2	2,510	138	87	二面58	Rc 1 1/2
16HS	R 2	7,286	198	123	二面80	Rc 2

插塞 / HP-R 型 (内螺纹安装用, 锥形螺纹)

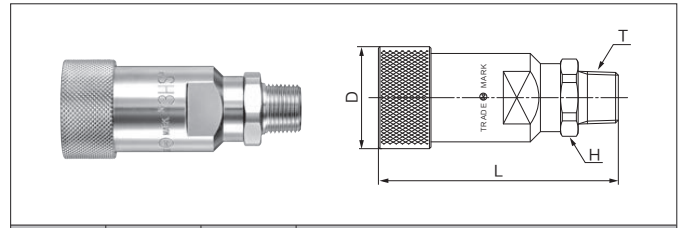
Plug / HP-R type (Male tapered thread)



型号 Model	匹配的 螺纹尺寸 Application	质量 (g) Mass	尺寸 (mm) Dimensions				
			L	ΦD	C	H	T
2HP-R	Rc 1/4	60	(49)	21	17.5	六角 19	R 1/4
3HP-R	Rc 3/8	102	(55.5)	25	22.5	六角 23	R 3/8
4HP-R	Rc 1/2	171	(63)	31	27.5	六角 29	R 1/2
6HP-R	Rc 3/4	197	(66)	35	27.5	六角 32	R 3/4

套筒 / HS-R 型 (内螺纹安装用, 锥形螺纹)

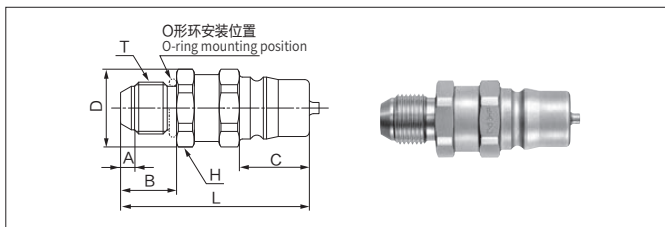
Socket / HS-R type (Male tapered thread)



型号 Model	匹配的 螺纹尺寸 Application	质量 (g) Mass	尺寸 (mm) Dimensions			
			L	ΦD	H	T
2HP-R	Rc 1/4	148	(66)	(27.5)	六角 19	R 1/4
3HP-R	Rc 3/8	245	(77.5)	(33)	六角 23	R 3/8
4HP-R	Rc 1/2	466	(90)	(43)	六角 29	R 1/2
6HP-R	Rc 3/4	493	(93)	(43)	六角 32	R 3/4

插塞 / HP-GP 型 (内螺纹安装用, 平行螺纹 外凸端口)

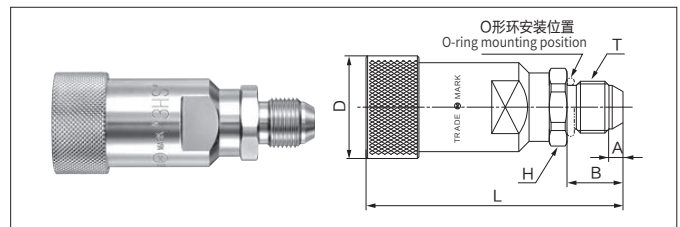
Plug / HP-GP type (Male parallel thread with 30° flare)



型号 Model	匹配的 螺纹尺寸 Application	质量 (g) Mass	适用 O形环 O-ring size	尺寸 (mm) Dimensions						
				L	ΦD	A	B	C	H	T
2HP-GP	G 1/4	62	P-11	(52.5)	21	(4.5)	16	17.5	六角19	G 1/4B
3HP-GP	G 3/8	103	P-14	(60.5)	25	(4.5)	18	22.5	六角23	G 3/8B
4HP-GP	G 1/2	173	P-18	(66)	31	(5.5)	20	27.5	六角29	G 1/2B
6HP-GP	G 3/4	203	P-24	(69)	35	(5.5)	22	27.5	六角32	G 3/4B

套筒 / HS-GP 型 (内螺纹安装用, 平行螺纹 外凸端口)

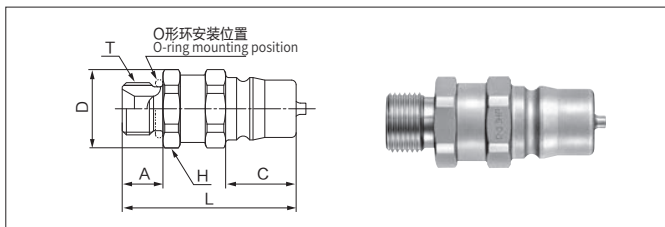
Socket / HS-GP type (Male parallel thread with 30° flare)



型号 Model	匹配的 螺纹尺寸 Application	质量 (g) Mass	适用 O形环 O-ring size	尺寸 (mm) Dimensions					
				L	ΦD	A	B	H	T
2HS-GP	G 1/4	149	P-11	(69.5)	(27.5)	(4.5)	16	六角19	G 1/4B
3HS-GP	G 3/8	246	P-14	(82.5)	(33)	(4.5)	18	六角23	G 3/8B
4HS-GP	G 1/2	476	P-18	(93)	(43)	(5.5)	20	六角29	G 1/2B
6HS-GP	G 3/4	498	P-24	(96)	(43)	(5.5)	22	六角32	G 3/4B

插塞 / HP-GS 型 (内螺纹安装用, 平行螺纹 内凹端口)

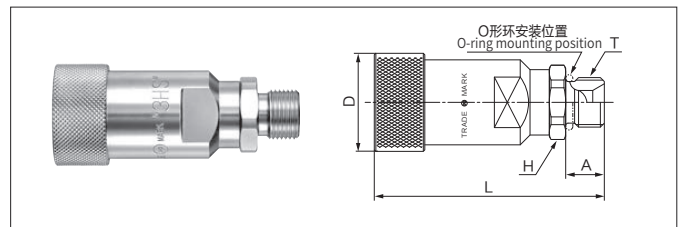
Plug / HP-GS type (Male parallel thread with 30° cone-seat)



型号 Model	匹配的 螺纹尺寸 Application	质量 (g) Mass	适用 O形环 O-ring size	尺寸 (mm) Dimensions					
				L	ΦD	A	C	H	T
2HP-GS	G 1/4	59	P-11	(48)	21	11.5	17.5	六角19	G 1/4B
3HP-GS	G 3/8	99	P-14	(55.5)	25	13	22.5	六角23	G 3/8B
4HP-GS	G 1/2	167	P-18	(60.5)	31	14.5	27.5	六角29	G 1/2B
6HP-GS	G 3/4	191	P-24	(63.5)	35	16.5	27.5	六角32	G 3/4B

套筒 / HS-GS 型 (内螺纹安装用, 平行螺纹 内凹端口)

Socket / HS-GS type (Male parallel thread with 30° cone-seat)



型号 Model	匹配的 螺纹尺寸 Application	质量 (g) Mass	适用 O形环 O-ring size	尺寸 (mm) Dimensions				
				L	ΦD	A	H	T
2HP-GS	G 1/4	146	P-11	(65)	(27.5)	11.5	六角19	G 1/4B
3HP-GS	G 3/8	242	P-14	(77.5)	(33)	13	六角23	G 3/8B
4HP-GS	G 1/2	469	P-18	(87.5)	(43)	14.5	六角29	G 1/2B
6HP-GS	G 3/4	485	P-24	(90)	(43)	16.5	六角32	G 3/4B

- GP型的对应安装形状为JISB8363的管用平行内螺纹内凹端口组合连接器,以及O形环密封连接器。GS型的对应安装形状为JISB8363的管用平行内螺纹外凸端口组合连接器以及O形环密封连接器。

The counterpart of GP type must be the female parallel thread specified in JIS B 8363 with 30° cone-seat or the coupling with O-ring seal. The counterpart of GS type must be the female parallel thread JIS B 8363 with 30° flare or the coupling with O-ring seal.

- 2HS型~8HS型 (66HS型除外) 也附带套环塞子。

使用之前, 请您务必通读尾页的“使用须知”以及制品附带的“注意提示、注意事项”。

Sleeve stopper design is available for models 2HS to 8HS (except 66HS).

D FOR MULTI-PORT CONNECTION(MANUAL) 多路快插连接系统(手动)

多路快速接头 MAM / MULTI PORTS MAM TYPE

空气用,多数配管型/Multiple air port system

最高使用压力
Working pressure



0.7MPa

阀门构造
Valve structure

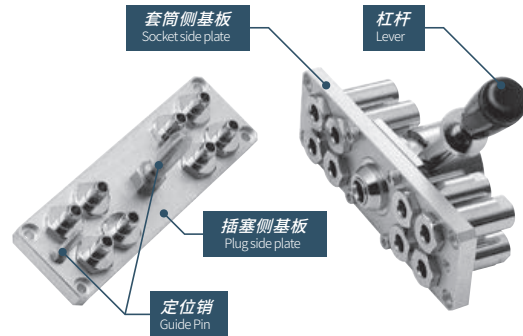


单路开关型
One-way shut-off

适用流体
Applicable fluids



空气
Air



一次连接操作可同时连接多个配管。
大幅度缩短了多个配管的更换时间。

Simultaneously connects several ports securely in one operation!
Greatly cuts cycle time in multiple ports replacement.

- 一次操作可同时连接多个配管;
Simultaneously connects several ports securely in one operation.
- 通过杠杆操作,即可轻松地手动进行安装与卸取;
Simple action with lever enables easy connection / disconnection manually.
- 杠杆带有塞子,可防止分离时套筒基板的突然飞出;
Comes with lock mechanism to prevent accidental disconnection.
- 仅在套筒侧有阀门。
Valve on socket side only.

规格 / Specifications

主体材质 Body material	快速接头: 黄铜(镀处理), 同步器: 钢铁、其他 基板: 铝合金(4.8,12孔型), 基板: 钢铁(16端口型) Cupla: Brass (Plated) Locking unit: Steel and others Plate: Aluminum alloy (4, 8, 12 ports) / Plate: Steel (16 ports)		
安装螺纹尺寸 Size (Thread)	Rc 1/8		
最高使用压力 Working pressure	0.7 {7}		
密封材质 Seal material	密封材质 Seal material	表示记号 Mark	使用温度范围 Working temperature range
使用温度范围 Working temperature range	丁腈橡胶 Nitrile rubber	NBR (SG)	-20 C ~+60 C

推荐的最大紧固扭矩 / Max. Tightening Torque

Nm {kgf·cm}

扭矩值/ Torque	5 {51}
-------------	--------

互换性 / Interchangeability

- 端口数目不同则不能连接。
No connection is possible between plates with different number of ports.

最小断截面积 / Min. Cross-Sectional Area

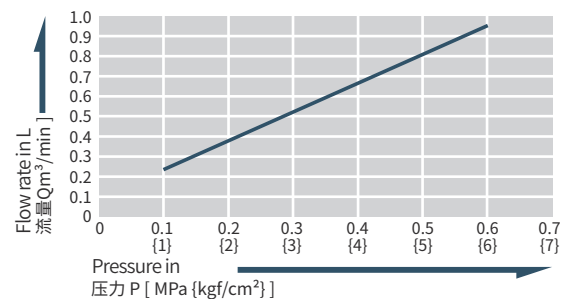
(mm²)

平均每个端口/ Per port	15.9
------------------	------

压力 / 流量特性图 (快速接头 平均每个端口)

Pressure/Flow Characteristics Per port with Cupla

- [测定条件] ● 流体名称: 空气
[Test conditions] Fluid : Air
● 温度: 室温
Temperature : Room temperature



真空用途适用性 / Suitability for Vacuum

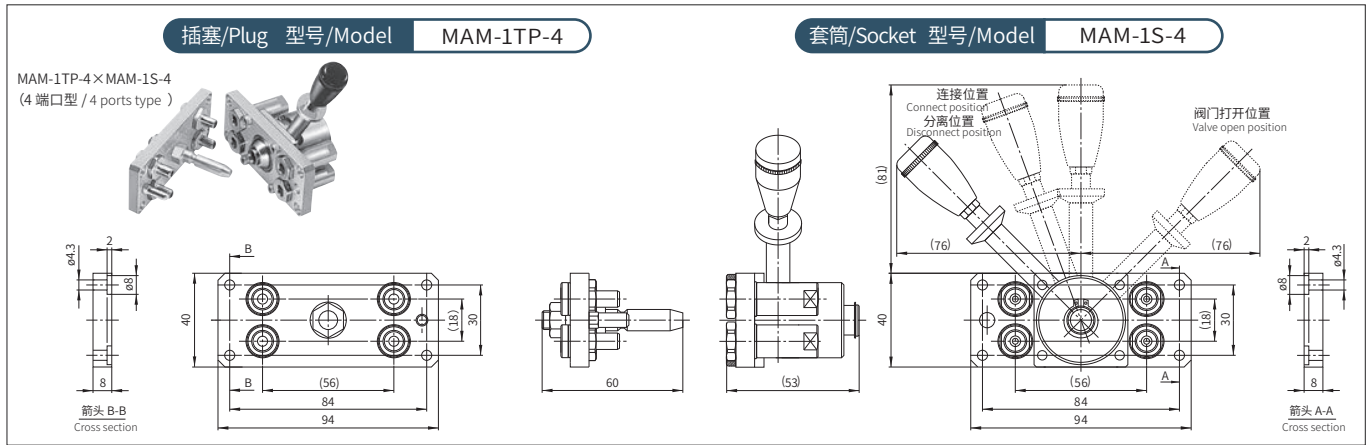
- 单独使用与连接时均不可用于真空用途。
Not suitable for vacuum application in either connected or disconnected condition.

产品型号、尺寸表 / MODELS AND DIMENSIONS

Model : MAM-1TP-4×MAM-1S-4 (4端口型/4 ports type)

(mm)

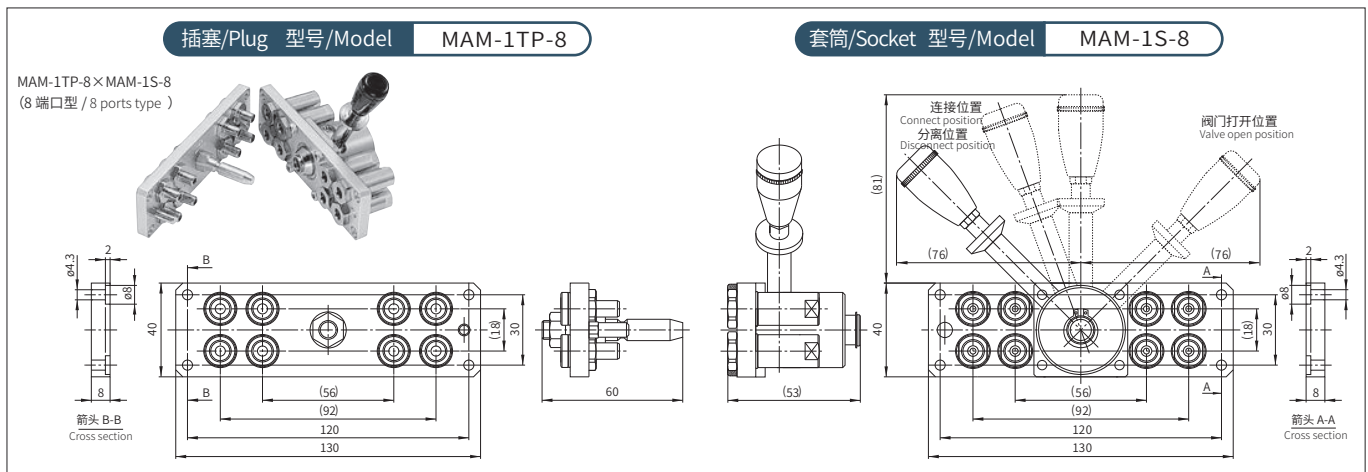
- 匹配的螺纹尺寸/Application: R 1/8
- 质量/Mass: 插塞/Plug (150g) 套筒/Socket (500g)



Model : MAM-1TP-8×MAM-1S-8 (8端口型/8 ports type)

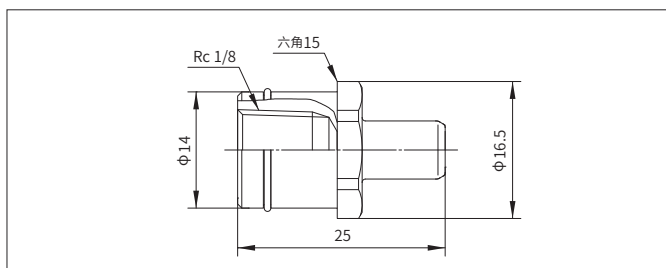
(mm)

- 匹配的螺纹尺寸/Application: R 1/8
- 质量/Mass: 插塞/Plug (250g) 套筒/Socket (650g)



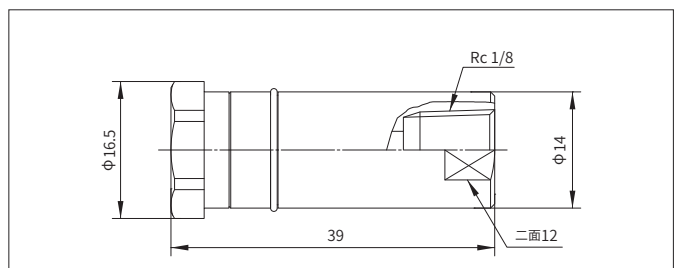
插塞/Plug MAS-1TP (快速接头单体/Individual Coupla)

- 匹配的螺纹尺寸/Application: R 1/8
- 质量/Mass: 17g
- 可与MAM-1TP-4/MAM-1TP-8/MAM-1TP-12/MAM-1TP-16连接。
Can be mounted on model MAM-1TP-4/MAM-1TP-8/
MAM-1TP-12/MAM-1TP-16.



套筒/Socket MAS-1S (快速接头单体/Individual Coupla)

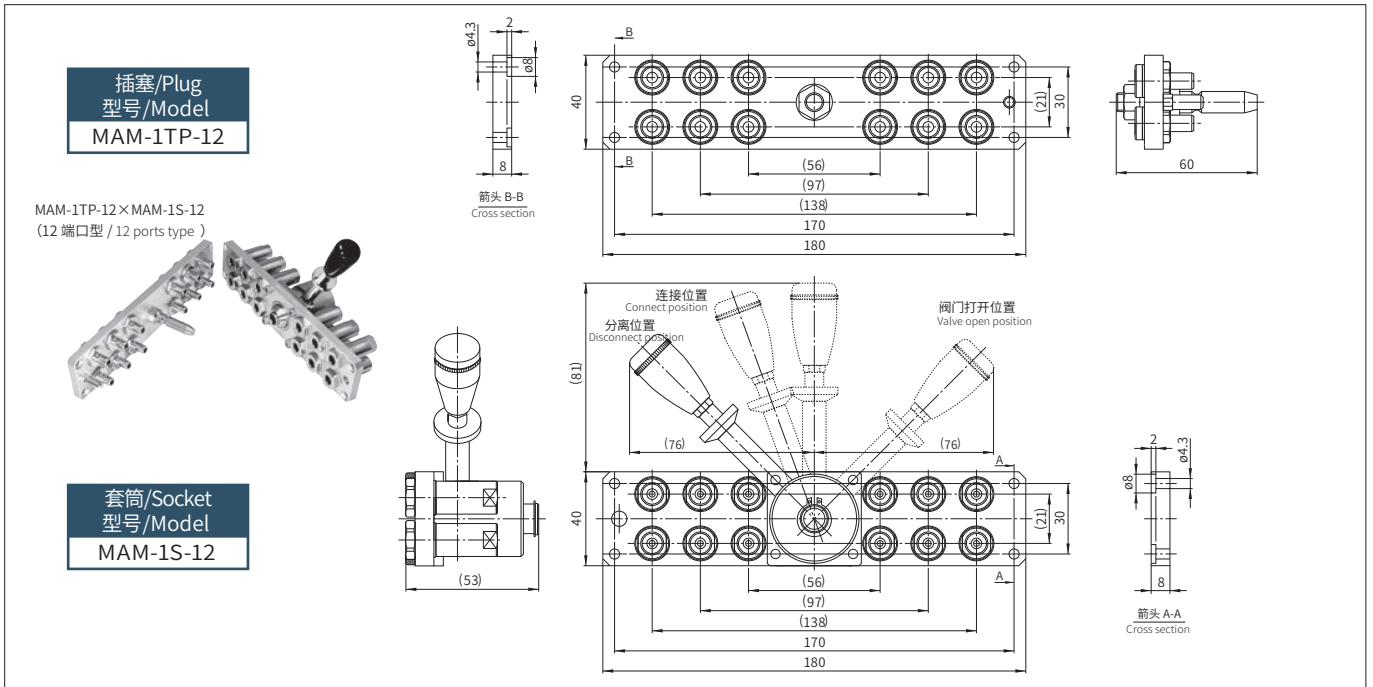
- 匹配的螺纹尺寸/Application: R 1/8
- 质量/Mass: 33g
- 可与MAM-1S-4/MAM-1S-8/MAM-1S-12/MAM-1S-16连接。
Can be mounted on model MAM-1S-4/MAM-1S-8/MAM-1S-12/
MAM-1S-16.



Model : MAM-1TP-12×MAM-1S-12 (12端口型/12 ports type)

(mm)

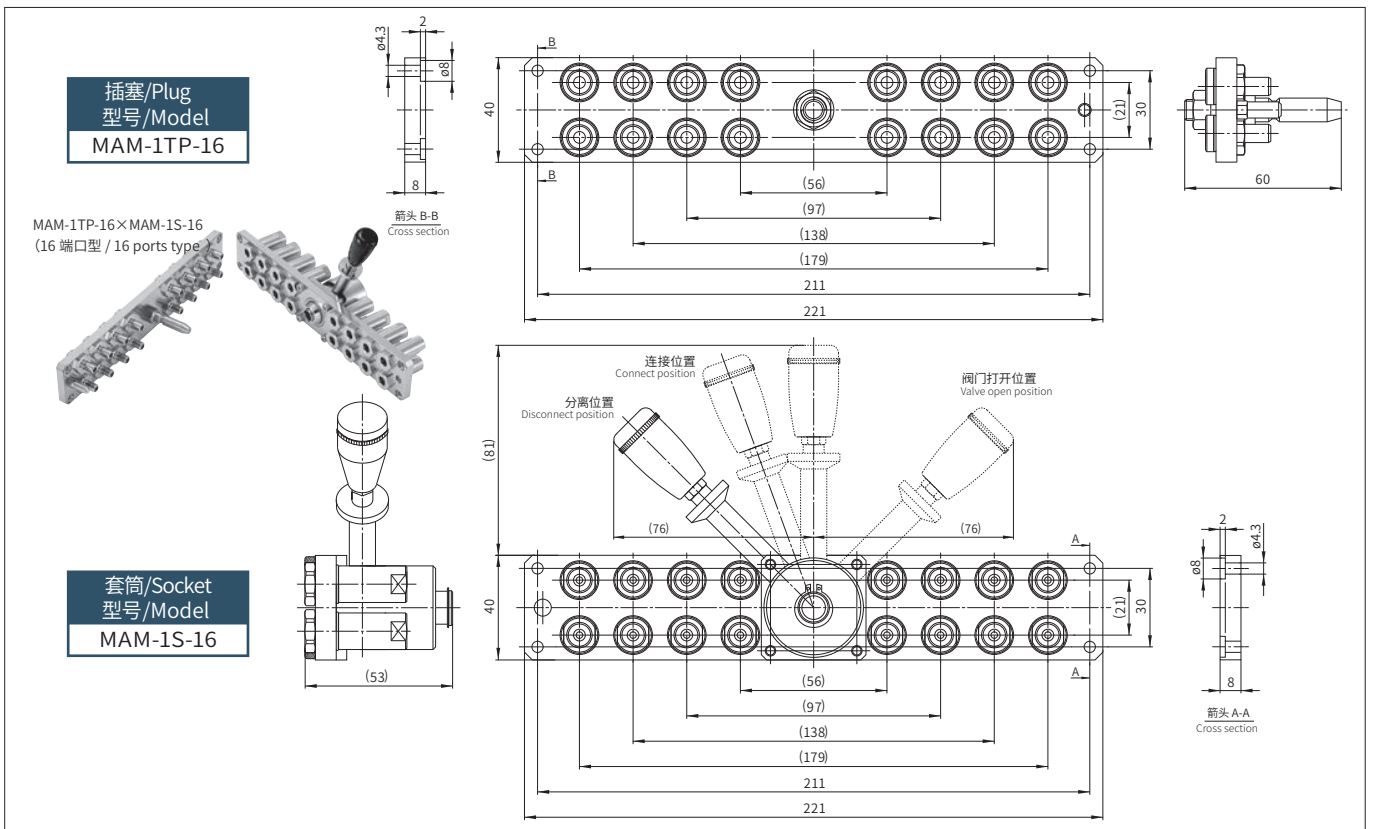
- 匹配的螺纹尺寸/Application: R 1/8
- 质量/Mass: 插塞/Plug (350g) 套筒/Socket (800g)



Model : MAM-1TP-16×MAM-1S-16 (16端口型/16 ports type)

(mm)

- 匹配的螺纹尺寸/Application: R 1/8
- 质量/Mass: 插塞/Plug (680g) 套筒/Socket (1180g)



- 使用之前, 请您务必通读尾页的“使用须知”以及制品附带的“注意提示、注意事项”。
Before use, please be sure to read “Safety Guide” described at the end of this book and “Instruction Sheet” that comes with the products.

多路快速接头 MAM-B / MULTI PORTS MAM-B TYPE

空气、水用/多数配管型/ Multiple port system

最高使用压力
Working pressure



1.0MPa
{10 kgf/cm²}

阀门构造
Valve structure



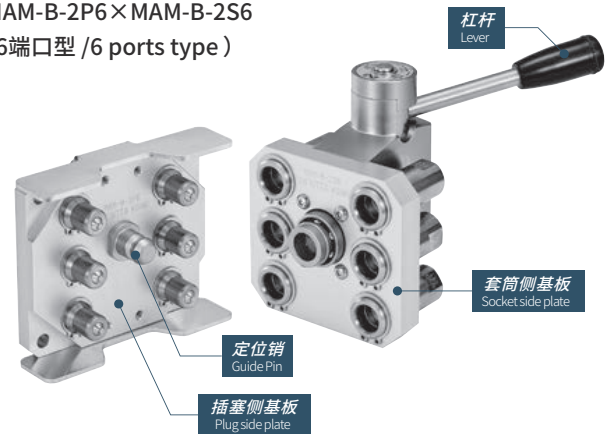
双路开关型
Two-way shut-off

适用流体
Applicable fluids



空气 水
Air Water

MAM-B-2P6×MAM-B-2S6
(6端口型 /6 ports type)



一次连接操作可同时连接多个配管。

大幅度缩短多个配管的更换时间。

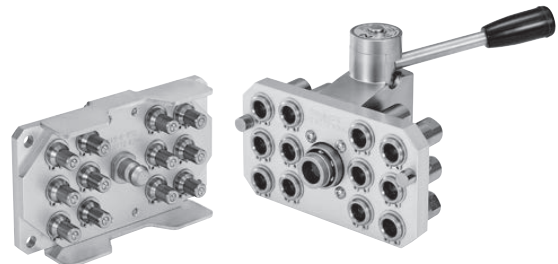
Simultaneously connects several ports securely in one operation.
Greatly reduces changeover time in multiple ports replacement.

- 采用2段式杠杆,防止急速分离造成的坠落事故;
Two-stage lever operation prevents Cupla from accidental dropping due to sudden detachment.
- 带防止意外脱离的锁扣功能;
Comes with lock mechanism to prevent accidental disconnection.
- 实现大流量化(相当于SP快速接头TypeA);
Large flow equivalent to that of SP Cupla Type A.
- 每个尺寸均备有2类型基板;
Two kinds of plates are available for each size.
- 插塞和套筒均内置的自动开关阀门,可防止分离时流体的流出;
Automatic shut-off valves in both socket and plug prevent fluid spill out on disconnection.
- 充分考虑单独使用时密封的稳定性,分离后插塞的阀门中心部自动复位;
Self-aligned valve design provides safety sealing of individual socket or plug when disconnected.

MAM-B-1P8×MAM-B-1S8
(8端口型 /8 ports type)



MAM-B-1P12×MAM-B-1S12
(12端口型 /12 ports type)



规格 / Specifications

产品型号 Model	插塞 Plug	MAM-B-1P8	MAM-B-1P12	MAM-B-2P6	MAM-B-2P8
	套筒 Socket	MAM-B-1S8	MAM-B-1S12	MAM-B-2S6	MAM-B-2S8
端口数目 Number of ports		6	12	6	8
安装螺纹尺寸 Size (Thread)		Rc 1/8		Rc 1/4	
主体材质 Body material		快速接头: 黄铜(镀处理), 基板: 铝合金 Cupla: Brass (Plated) Plate: Aluminum alloy		同步器: 钢铁(镀处理) Locking unit: Steel (Plated)	
最高使用压力 Working pressure		1.0 {10}			
空气温度范围 Ambient temperature range		0°C ~ + 60°C			
密封材质 Seal material	密封材质 Seal material	表示记号 Mark	使用温度范围 Working temperature range	备注 Remarks	
使用温度范围 Working temperature range	氟素橡胶 Fluoro rubber	FKM (X-100)	0°C ~ + 60°C	标准材质 Standard material	

推荐的最大紧固扭矩 / Max. Tightening Torque

N · m {kgf · cm}

安装螺纹尺寸 Size (Thread)	Rc 1/8	Rc 1/4
扭矩值 Torque	5 {51}	9 {92}

最小断截面积(平均每个端口) / Min. Cross-Sectional Area per Port

(mm²)

产品型号 Model	1SP 型	2SP 型
最小断截面积 Min. cross-sectional area	14	26

真空用途适用性 / Suitability for Vacuum

1.3×10^{-1} Pa { 1×10^{-3} mmHg}

套筒单独使用时 Socket only	插塞单独使用时 Plug only	连接时 When connected
—	—	可使用 Operational

连接时的空气混入量(平均每个端口) / Admixture of Air on Connection per Port

(mm²)

产品型号 Model	1SP 型	2SP 型
空气混入量 Volume of air	0.6	1.1

分离时的液体泄漏量(平均每个端口) / Volume of Spillage on Disconnection per Port

(mm²)

产品型号 Model	1SP 型	2SP 型
液体泄漏量 Volume of spillage	0.4	0.8

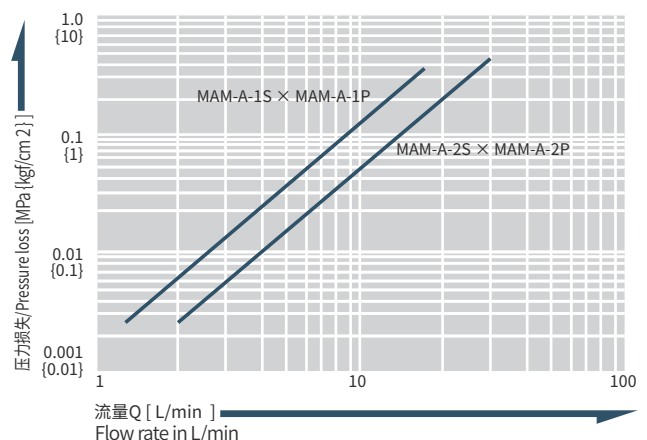
互换性 / Interchangeability

- 尺寸以及端口数目不同时则不能连接。
No connection is possible between plates with different number of ports.

流量/ 压力损失特性图(快速接头 平均每个端口)

Flow Rate / Pressure Loss Characteristics Per port of Cupla

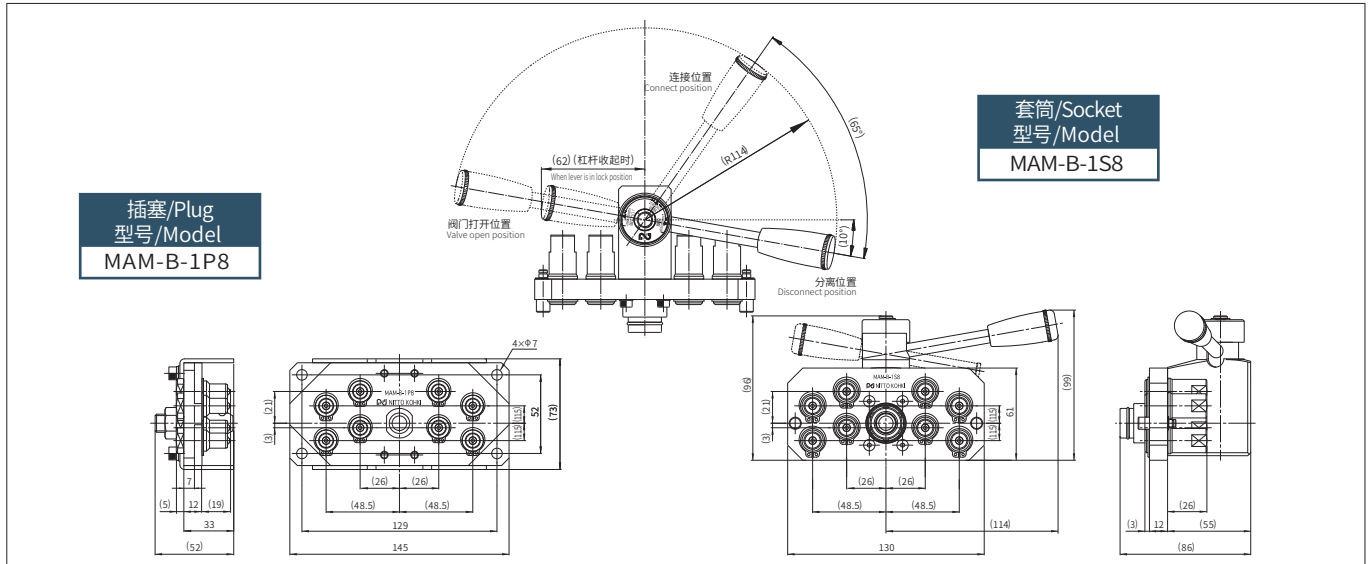
- [测定条件] ● 流体名称: 水
[Test conditions] Fluid : Water
- 温度: 25°C ± 5°C
Temperature



产品型号、尺寸表 / MODELS AND DIMENSIONS

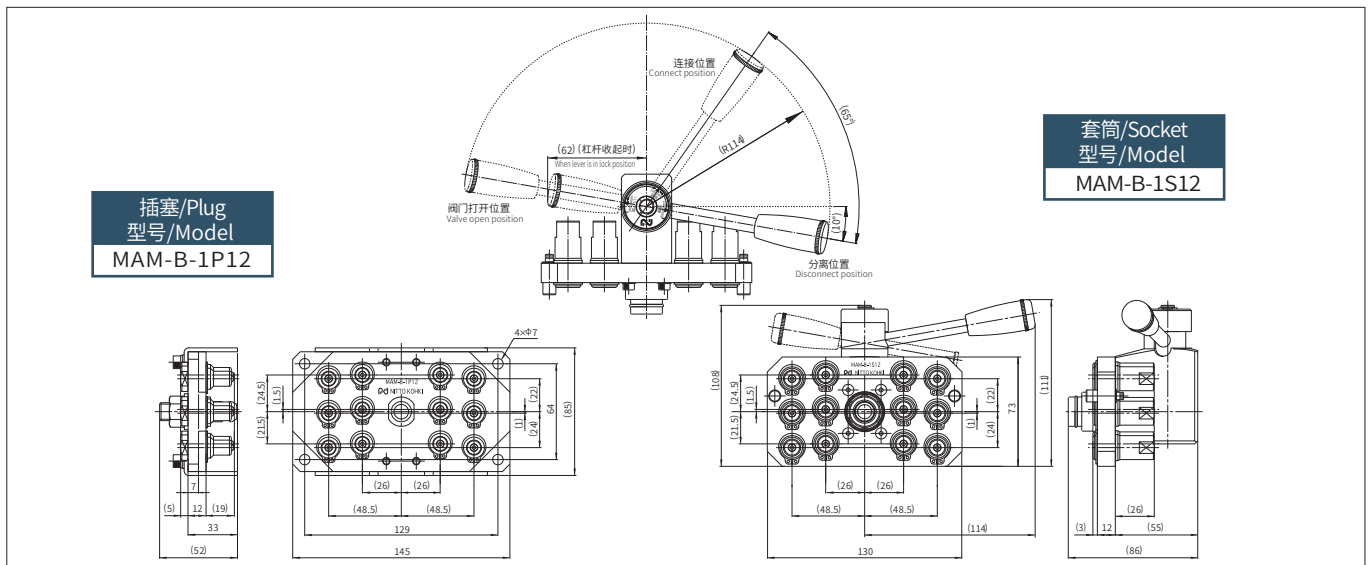
Model : MAM-B-1P8×MAM-B-1S8 (8端口型, 基板:小/8 ports type) (mm)

- 匹配的螺纹尺寸/Application: R 1/8
- 质量/Mass: 插塞/Plug (660g) 套筒/Socket (1210g)



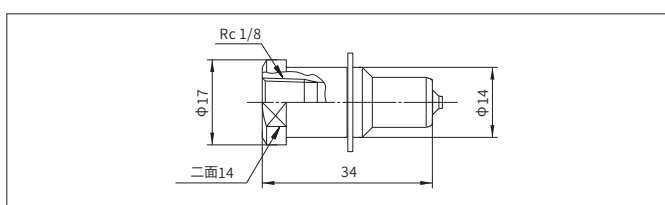
Model : MAM-B-1P12×MAM-B-1S12 (12端口型, 基板:大/12 ports type) (mm)

- 匹配的螺纹尺寸/Application: R 1/8
- 质量/Mass: 插塞/Plug (790g) 套筒/Socket (1430g)



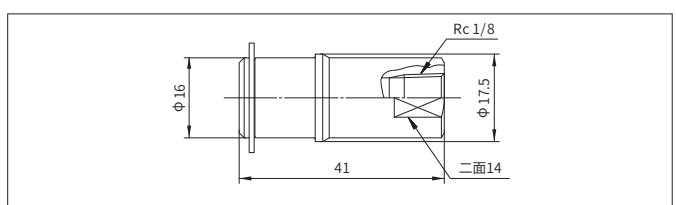
插塞/Plug MAM-A-1P (快速接头单体/Individual Cupla)

- 匹配的螺纹尺寸/Application: R 1/8 质量/Mass: 25g
- 可安装在MAM-B-1P8以及MAM-B-1P12上。
Can be mounted on model MAM-B-1P8 and MAM-B-1P12.



套筒/Socket MAM-A-1S (快速接头单体/Individual Cupla)

- 匹配的螺纹尺寸/Application: R 1/8 质量/Mass: 49g
- 可安装在MAM-B-1S8以及MAM-B-1S12上。
Can be mounted on model MAM-B-1S8 and MAM-B-1S12.

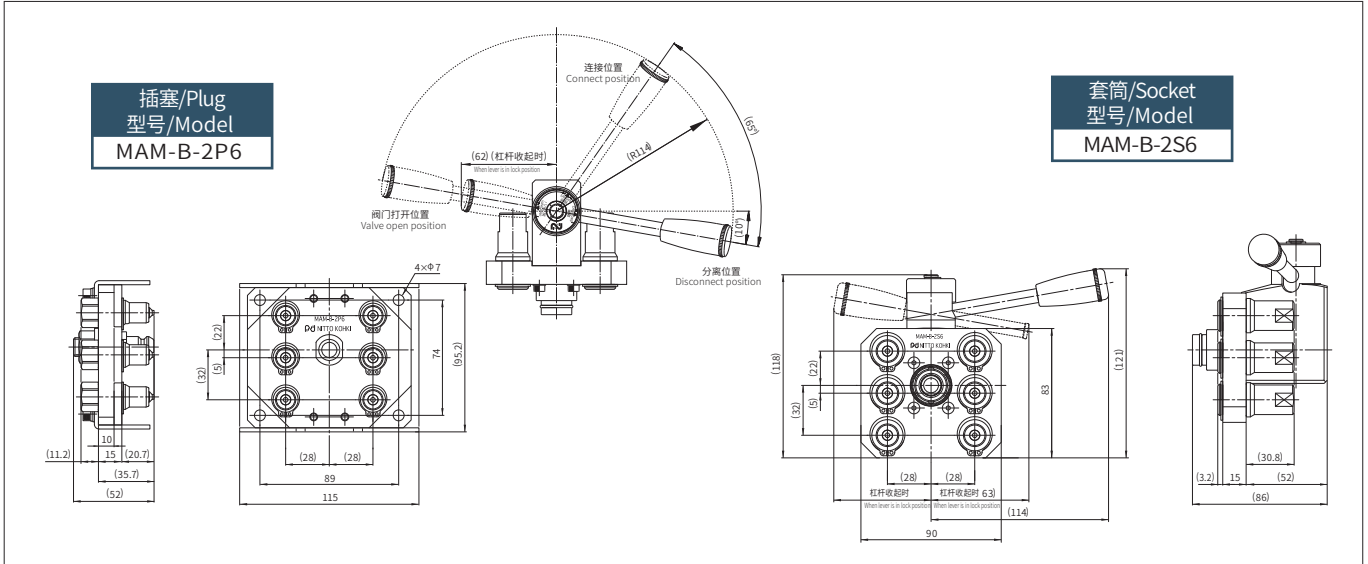


- 我们也承接订制上述以外的尺寸组合。
Made-to-order Multi Cuplas are available on request, such as a combination of different sizes on the flange plate.

产品型号、尺寸表 / MODELS AND DIMENSIONS

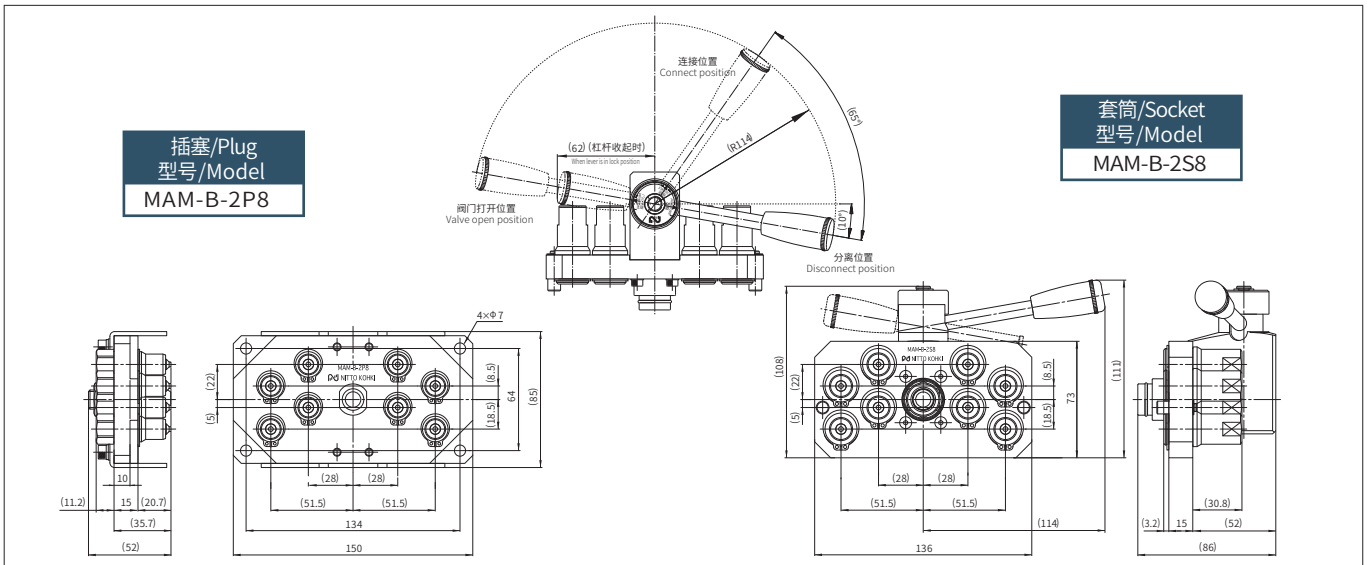
Model : MAM-B-2P6×MAM-B-2S6 (6端口型, 基板:小/6 ports type) (mm)

- 匹配的螺纹尺寸/Application: R 1/4
- 质量/Mass: 插塞/Plug (740g) 套筒/Socket (1280g)



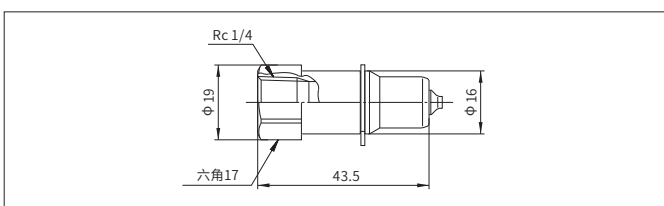
Model : MAM-B-2P8×MAM-B-2S8 (8端口型, 基板:大/8 ports type) (mm)

- 匹配的螺纹尺寸/Application: R 1/4
- 质量/Mass: 插塞/Plug (920g) 套筒/Socket (1550g)



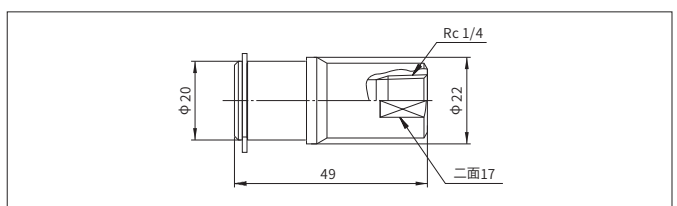
插塞/Plug MAM-A-2P (快速接头单体/Individual Cupla)

- 匹配的螺纹尺寸/Application: R 1/4 质量/Mass: 40g
- 不可安装于MAM-B-2P6以及MAM-B-2P8。
Can be mounted on model MAM-B-2P6 and MAM-B-2P8.



套筒/Socket MAM-A-2S (快速接头单体/Individual Cupla)

- 匹配的螺纹尺寸/Application: R 1/4 质量/Mass: 82g
- 可安装于MAM-B-2S6以及MAM-B-2S8。
Can be mounted on model MAM-B-2S6 and MAM-B-2S8.



- 我们也承接订制上述以外的尺寸组合。

Made-to-order Multi Cuplas are available on request, such as a combination of different sizes on the flange plate.

多路快速接头 MAM-A / MULTI PORTS MAM-A TYPE

空气、水用/多数配管型/ Multiple port system

最高使用压力
Working pressure



1.0MPa
{10 kgf/cm²}

阀门构造
Valve structure



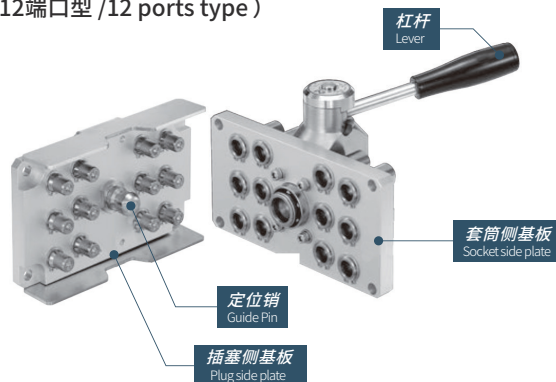
双路开关型
Two-way shut-off

适用流体
Applicable fluids



空气
Air
水
Water

MAM-A-2P12×MAM-A-2S12
(12端口型 /12 ports type)



一次操作可同时连接多个配管。

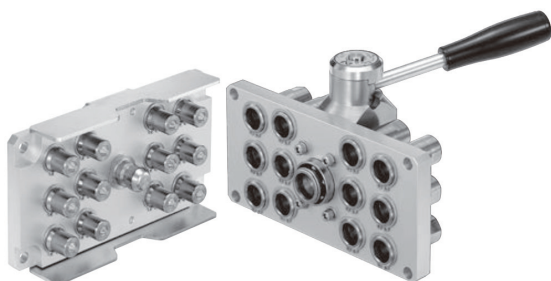
缩短了多个配管的更换时间。

Simultaneously connects several ports securely in one operation!

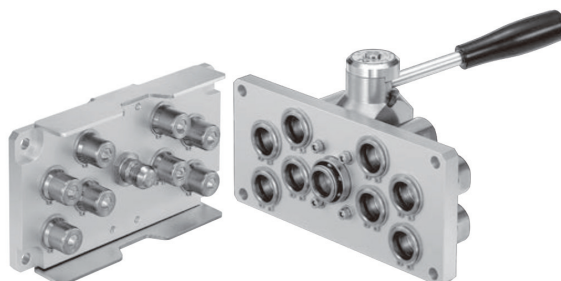
Greatly reduces changeover time in multiple ports replacement.

- 采用2段式杠杆,防止急速分离造成的坠落事故;
Two-stage lever operation prevents Cupla from accidental dropping due to sudden detachment.
- 带防止意外脱离的锁扣功能;
Comes with lock mechanism to prevent accidental disconnection.
- 实现大流量化(相当于SP快速接头TypeA);
Large flow equivalent to that of SP Cupla Type A.
- 每个尺寸均备有2类型基板;
Two kinds of plates are available for each size.
- 插塞和套筒均内置的自动开关阀门,可防止分离时流体的流出;
Automatic shut-off valves in both socket and plug prevent fluid spill out on disconnection.
- 充分考虑单独使用时密封的稳定性,分离后插塞的阀门中心部自动复位;
Self-aligned valve design provides safety sealing of individual socket or plug when disconnected.

MAM-A-3P12×MAM-A-3S12
(12端口型 /12 ports type)



MAM-A-4P8×MAM-A-4S8
(8端口型 /8 ports type)



规格 / Specifications

产品型号 Model	插塞 Plug	MAM-A-2P6	MAM-A-2P12	MAM-A-3P6	MAM-A-3P12	MAM-A-4P4	MAM-A-4P8
	套筒 Socket	MAM-A-2S6	MAM-A-2S12	MAM-A-3S6	MAM-A-3S12	MAM-A-4S4	MAM-A-4S8
端口数目 Number of ports		6	12	6	12	4	8
安装螺纹尺寸 Size (Thread)		Rc 1/4		Rc 3/8		Rc 1/2	
主体材质 Body material		快速接头: 黄铜 (镀处理), 基板: 铝合金 Cupla: Brass (Plated) Plate: Aluminum alloy				同步器: 钢铁 (镀处理) Locking unit: Steel (Plated)	
最高使用压力 Working pressure		1.0 {10}					
空气温度范围 Ambient temperature range		0°C ~ +60°C					
密封材质 Seal material	密封材质 Seal material	表示记号 Mark		使用温度范围 Working temperature range		备注 Remarks	
使用温度范围 Working temperature range	氟素橡胶 Fluoro rubber	FKM (X-100)		-20°C ~ +180°C		标准材质 Standard material	

推荐的最大紧固扭矩 / Max. Tightening Torque

N · m {kgf · cm}

安装螺纹尺寸 Size (Thread)	Rc 1/4	Rc 3/8	Rc 1/2
扭矩值 Torque	9 {92}	12 {122}	30 {306}

最小断截面积 (平均每个端口) / Min. Cross-Sectional Area per Port

(mm²)

产品型号 Model	2SP 型	3SP 型	4SP 型
最小断截面积 Min. cross-sectional area	26	51	73

真空用途适用性 / Suitability for Vacuum

1.3×10^{-1} Pa { 1×10^{-3} mmHg}

套筒单独使用时 Socket only	插塞单独使用时 Plug only	连接时 When connected
—	—	可使用 Operational

连接时的空气混入量 (平均每个端口) / Admixture of Air on Connection per Port

(mm²)

产品型号 Model	2SP 型	3SP 型	4SP 型
空气混入量 Volume of air	1.1	2.7	3.9

分离时的液体泄漏量 (平均每个端口) / Volume of Spillage on Disconnection per Port

(mm²)

产品型号 Model	2SP 型	3SP 型	4SP 型
液体泄漏量 Volume of spillage	0.8	2.1	3.4

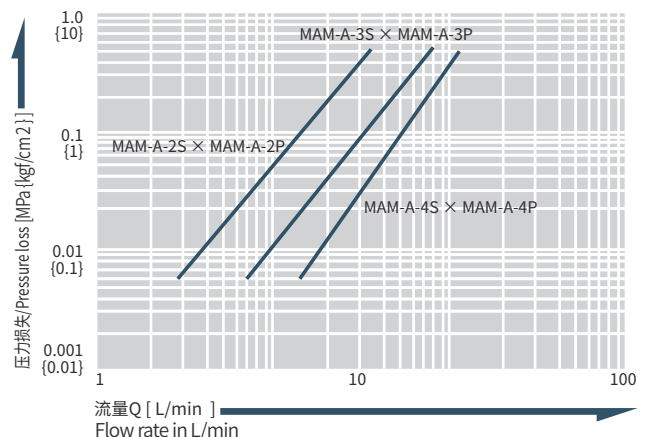
互换性 / Interchangeability

- 尺寸以及端口数目不同时则不能连接。
No connection is possible between plates with different number of ports.

流量 / 压力损失特性图 (快速接头 平均每个端口)

Flow Rate / Pressure Loss Characteristics Per port of Cupla

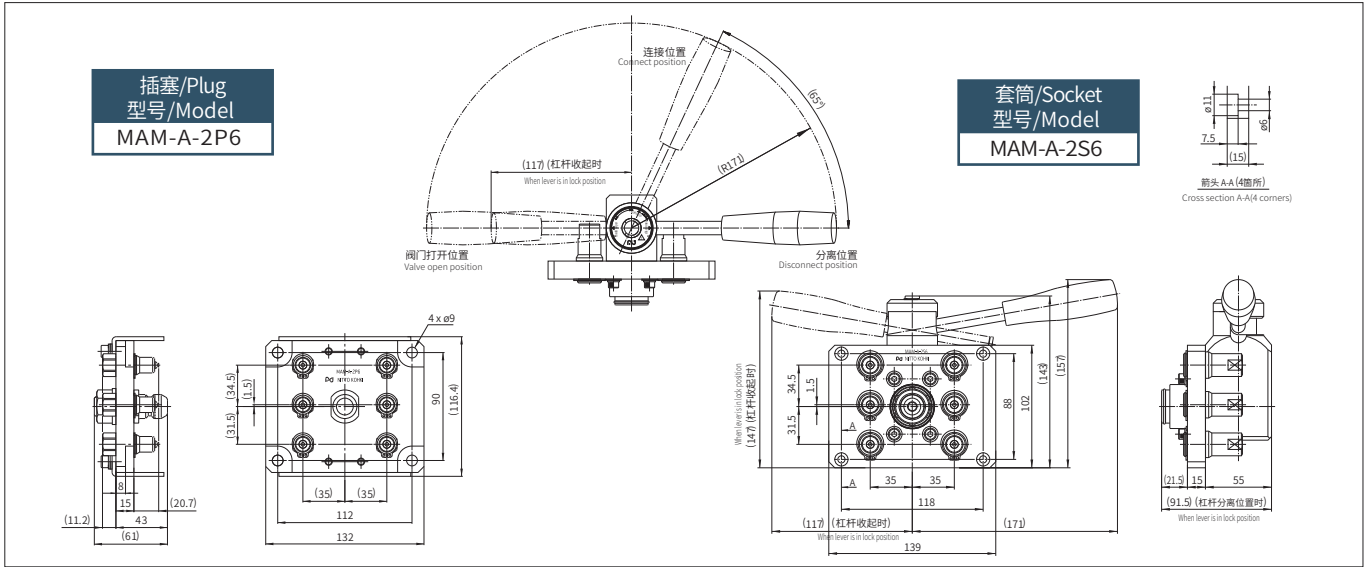
- [测定条件] ● 流体名称: 水
[Test conditions] Fluid: Water
- 温度: 25°C ± 5°C
Temperature



产品型号、尺寸表 / MODELS AND DIMENSIONS

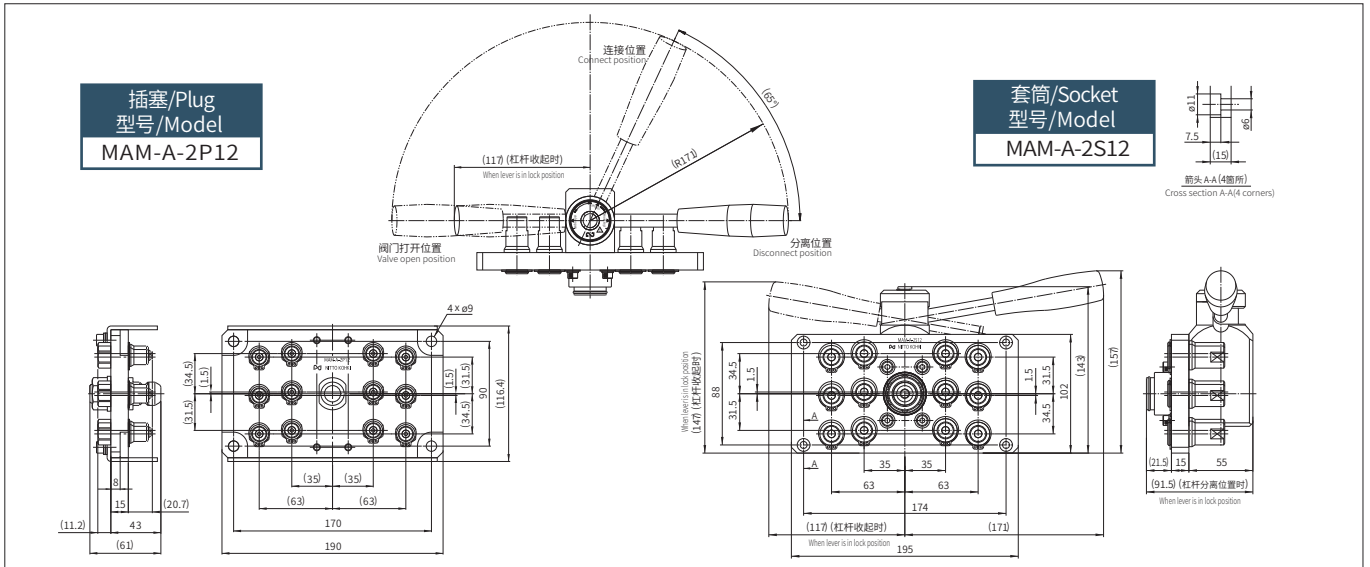
Model : MAM-A-2P6×MAM-A-2S6 (6端口型, 基板:小/6 ports type) (mm)

- 匹配的螺纹尺寸/Application: R 1/4
- 质量/Mass: 插塞/Plug (1100g) 套筒/Socket (2150g)



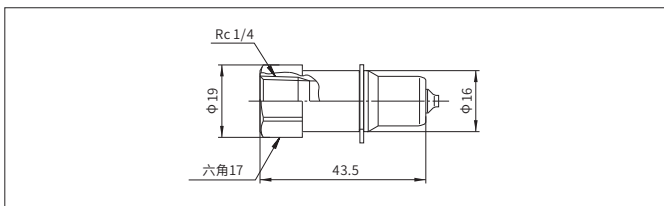
Model : MAM-A-2P12×MAM-A-2S12 (12端口型, 基板:大/12 ports type) (mm)

- 匹配的螺纹尺寸/Application: R 1/4
- 质量/Mass: 插塞/Plug (1650g) 套筒/Socket (2800g)



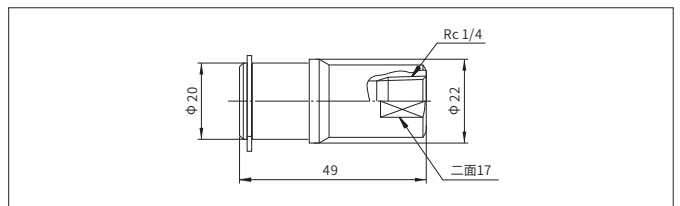
插塞/Plug MAM-A-2P (快速接头单体/Individual Coupla)

- 匹配的螺纹尺寸/Application: R 1/4
- 质量/Mass: 40g



套筒/Socket MAM-A-2S (快速接头单体/Individual Coupla)

- 匹配的螺纹尺寸/Application: R 1/4
- 质量/Mass: 82g



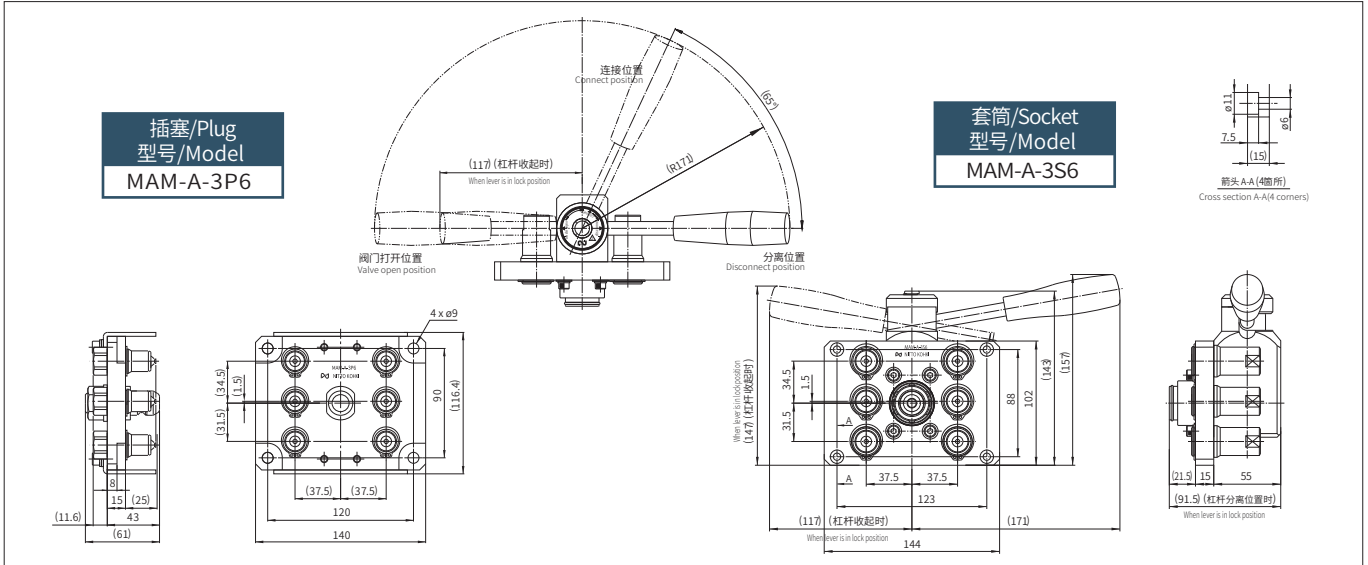
- 我们也承接订制上述以外的尺寸组合。

Made-to-order Multi Couplas are available on request, such as a combination of different sizes on the flange plate.

产品型号、尺寸表 / MODELS AND DIMENSIONS

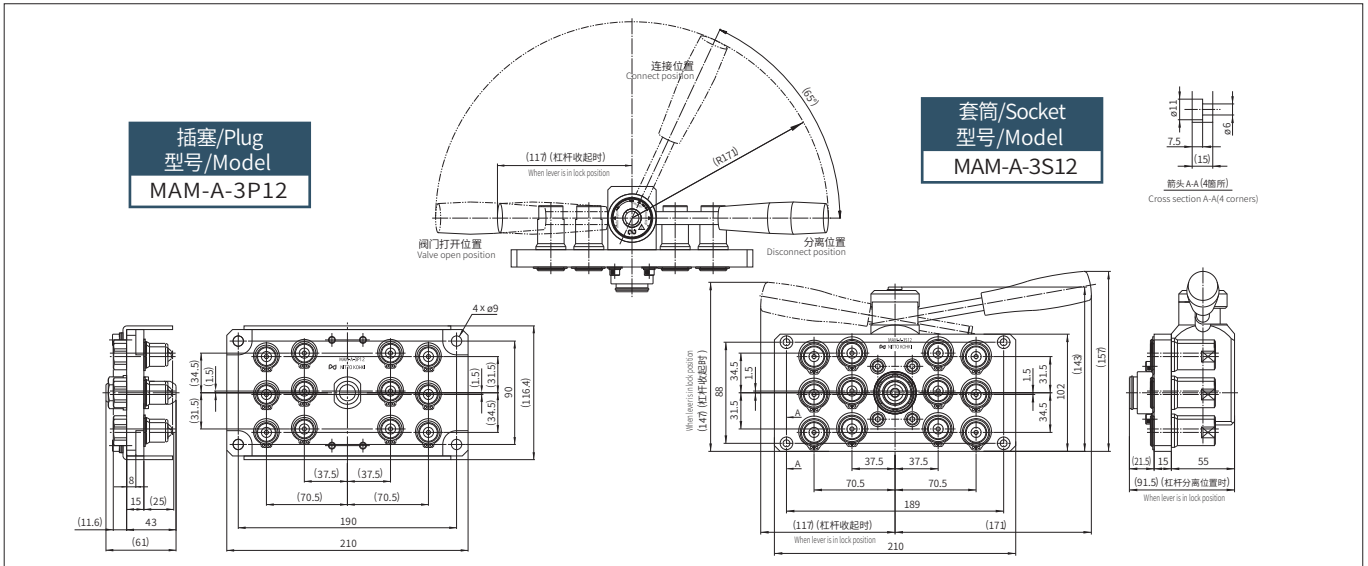
Model : MAM-A-3P6×MAM-A-3S6 (6端口型, 基板:小/6 ports type) (mm)

- 匹配的螺纹尺寸/Application: R 3/8
- 质量/Mass: 插塞/Plug (1250g) 套筒/Socket (2400g)



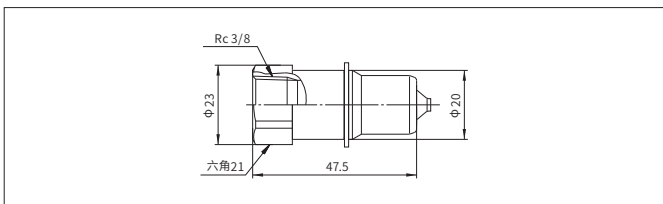
Model : MAM-A-3P12×MAM-A-3S12 (12端口型, 基板:大/8 ports type) (mm)

- 匹配的螺纹尺寸/Application: R 3/8
- 质量/Mass: 插塞/Plug (1950g) 套筒/Socket (3300g)



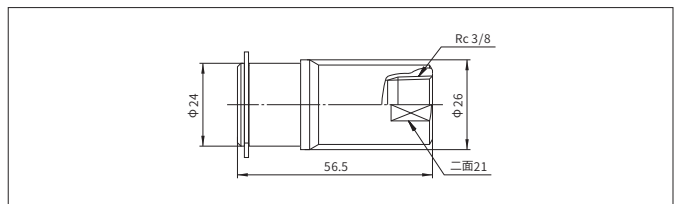
插塞/Plug MAM-A-3P (快速接头单体/Individual Coupla)

- 匹配的螺纹尺寸/Application: R 3/8
- 质量/Mass: 62g



套筒/Socket MAM-A-3S (快速接头单体/Individual Coupla)

- 匹配的螺纹尺寸/Application: R 3/8
- 质量/Mass: 122g



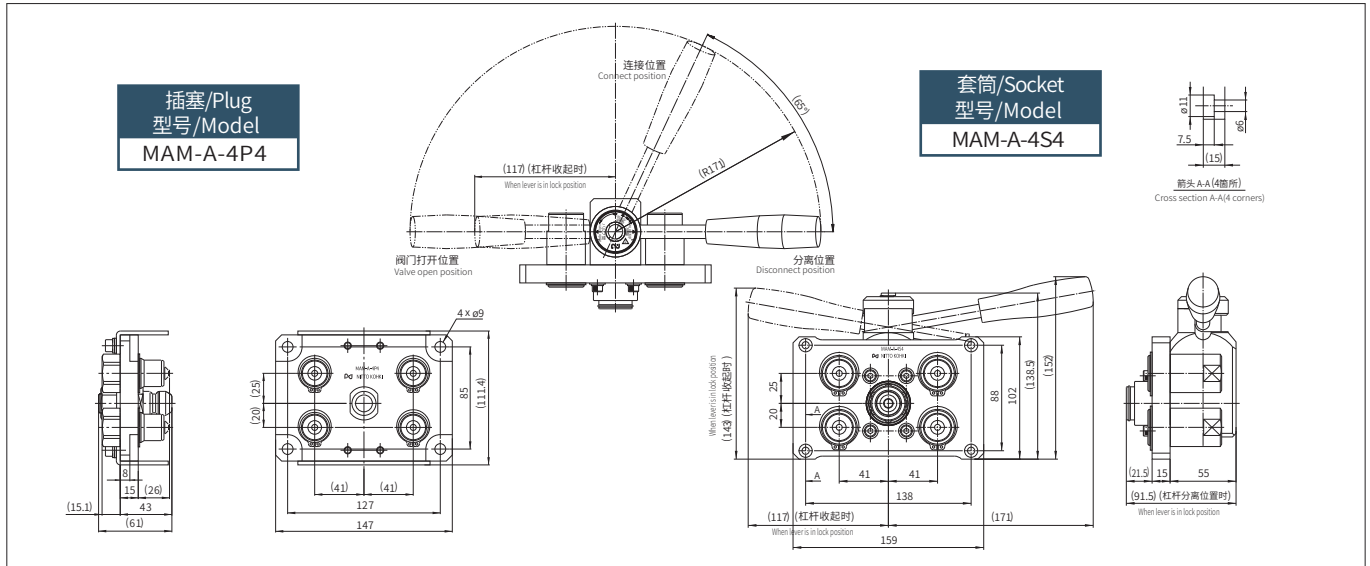
- 我们也承接订制上述以外的尺寸组合。

Made-to-order Multi Cuplas are available on request, such as a combination of different sizes on the flange plate.

产品型号、尺寸表 / MODELS AND DIMENSIONS

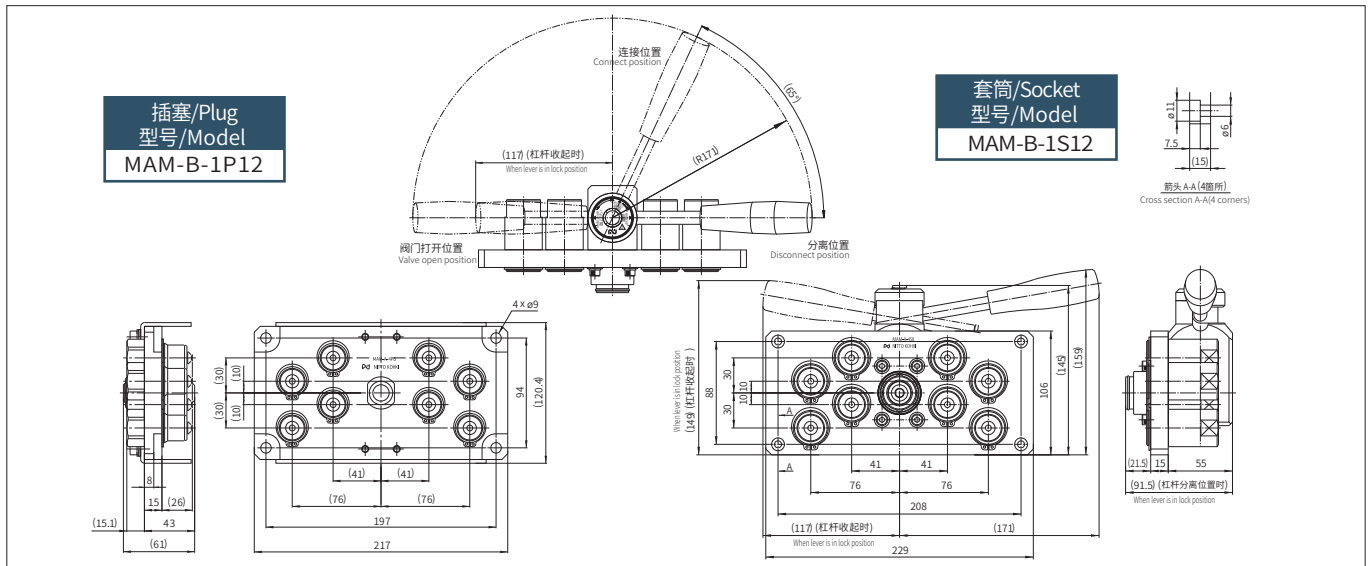
Model : MAM-A-4P4×MAM-A-4S4 (4端口型, 基板:小/4 ports type) (mm)

- 匹配的螺纹尺寸/Application: R 1/2
- 质量/Mass: 插塞/Plug (1400g) 套筒/Socket (2700g)



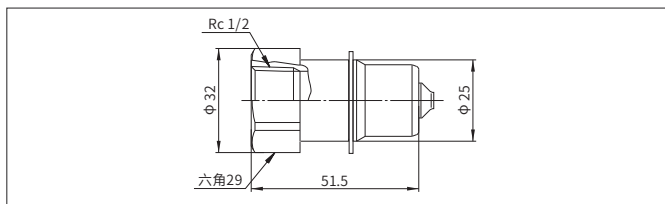
Model : MAM-A-4P8×MAM-A-4S8 (8端口型, 基板:大/8 ports type) (mm)

- 匹配的螺纹尺寸/Application: R 1/2
- 质量/Mass: 插塞/Plug (2300g) 套筒/Socket (4000g)



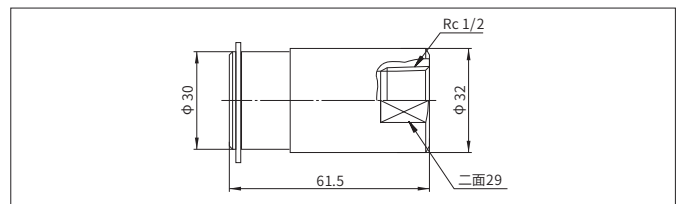
插塞/Plug MAM-A-4P (快速接头单体/Individual Cupla)

- 匹配的螺纹尺寸/Application: R 1/2
- 质量/Mass: 127g



套筒/Socket MAM-A-4S (快速接头单体/Individual Cupla)

- 匹配的螺纹尺寸/Application: R 1/2
- 质量/Mass: 256g

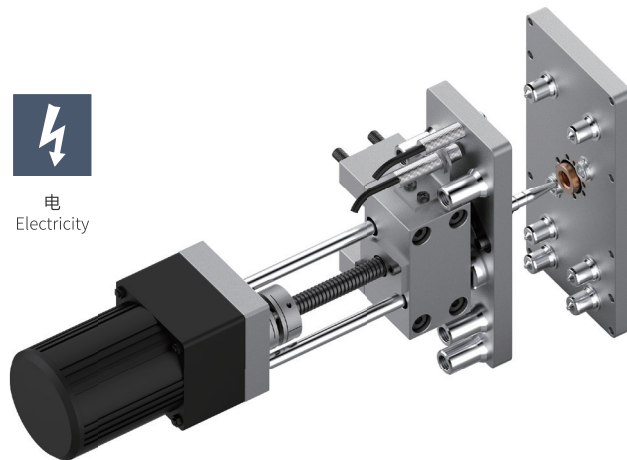
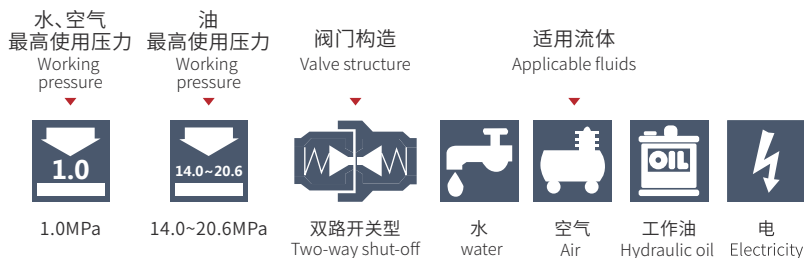


- 我们也承接订制上述以外的尺寸组合。

Made-to-order Multi Cuplas are available on request, such as a combination of different sizes on the flange plate.

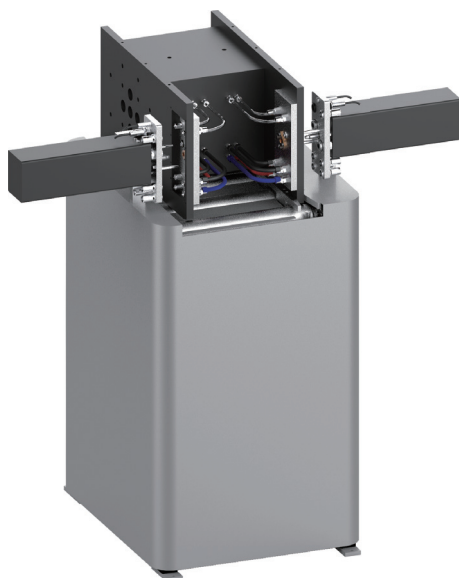
D FOR MULTI-PORT CONNECTION(AUTOMATIC) 多路快插连接系统(自动)

自动快速接头 / AUTOMATIC QUICK COUPLING



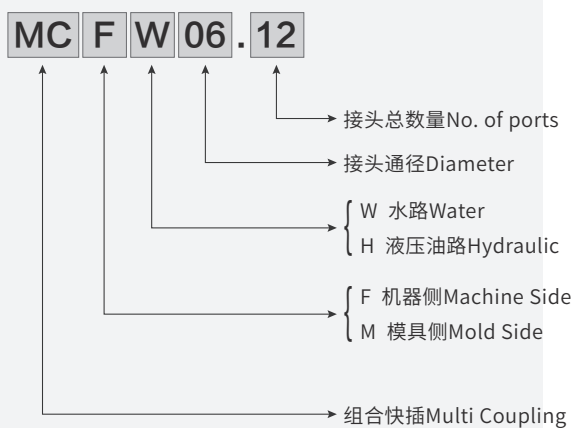
- 一次操作可同时连接多个配管；
Simultaneously connects several ports securely in one operation.
- 缩短了多个配管的更换时间；
Greatly reduces changeover time in multiple ports replacement.
- 套筒与插塞都内置有自动开关阀门，可防止分离时流体的流出；
Automatic shut-off valves in both socket and plug prevent fluid spill out on disconnection.
- 充分考虑单独使用时密封的稳定性，分离后插塞的阀门中心部自动复位。
Self-aligned valve design provides safety sealing of individual socket or plug when disconnected.

D PREHEATING STATION 预热站



- 提前预热模具节约换模时的停机时间；
Preheat mold before loading mold into IMM.
- 可配动力辊筒或无动力辊筒；
Configure roller with power drive or no power drive.
- 可选配手动快插或自动快插；
Configure manual or automatic quick coupling.
- 可集成到换模系统中。
Integrate into quick mold change system.

手动多路快插型号规则 MULTI PORTS NAME RULES



青岛力磁电气股份有限公司 Qingdao Lici Electric Inc.

注塑机、冲压机以及机加工快速换模系统整体解决方案的专业提供商，是磁力装夹与起重搬运的技术应用专家，也是磁力行业技术领先的高新技术企业。

子公司分布：青岛、台湾、重庆、宁波、苏州、东莞、大连、武汉、天津、长春、常州、上海、厦门、成都

Qingdao Lici Electric Inc. is a professional provider of total QMCS solution in injection molding machine and punching machine, an expert of magnetic application in workpiece clamping and lifting, also a technology leading company in magnetism industry.

Subsidiary Distribution: Qingdao, Taiwan, Chongqing, Ningbo, Suzhou, Dongguan, Dalian, Wuhan, Tianjin, Changchun, Changzhou, Shanghai, Xiamen, Chengdu



A: 青岛市城阳区春阳路88号天安数码城27号楼
27th Building, No.88, Chunyang Road, TianAn Cyber, Qingdao, China
T: +86-532-87769769 F: +86-532-87769216
W: www.licidianqi.com E: sales@licidianqi.com