

HYDRAULIC CLAMPING SYSTEM FOR QUICK MOLD CHANGE 快速换模液压夹模系统

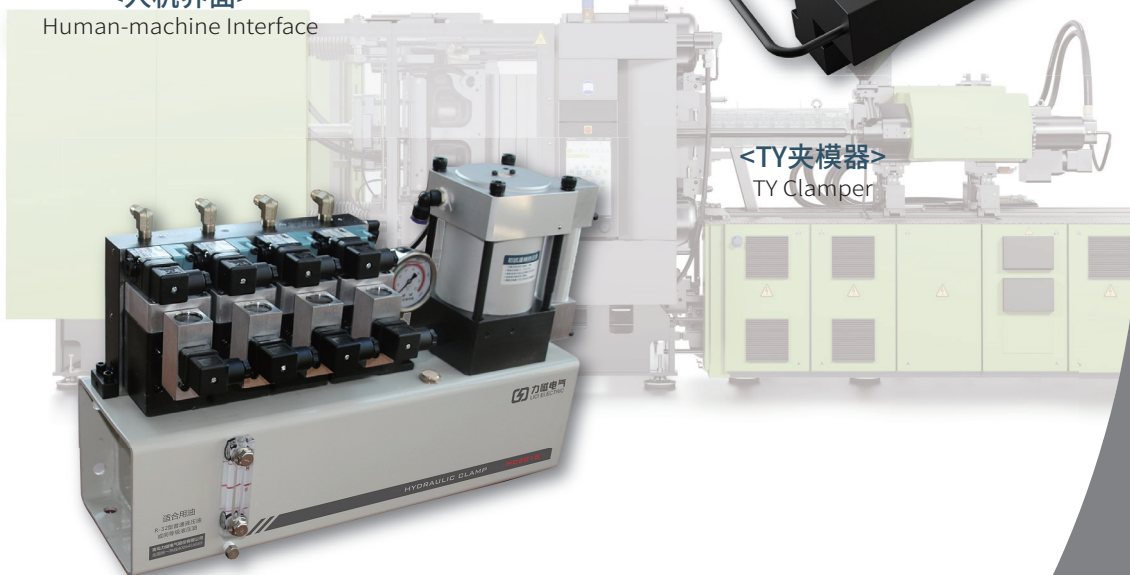
安全/高效/柔性/品质
SAFETY/PRODUCTIVITY/FIEXIBILITY/QUALITY



<人机界面>
Human-machine Interface



<TY夹模器>
TY Clamper



<气动油压泵>
Air-driven Hydraulic Pump

H HYDRAULIC CLAMPING 液压夹模

模具放入形式 / MOLD-IN DIRECTION

模具水平放入时 / HORIZONTAL DIRECTION

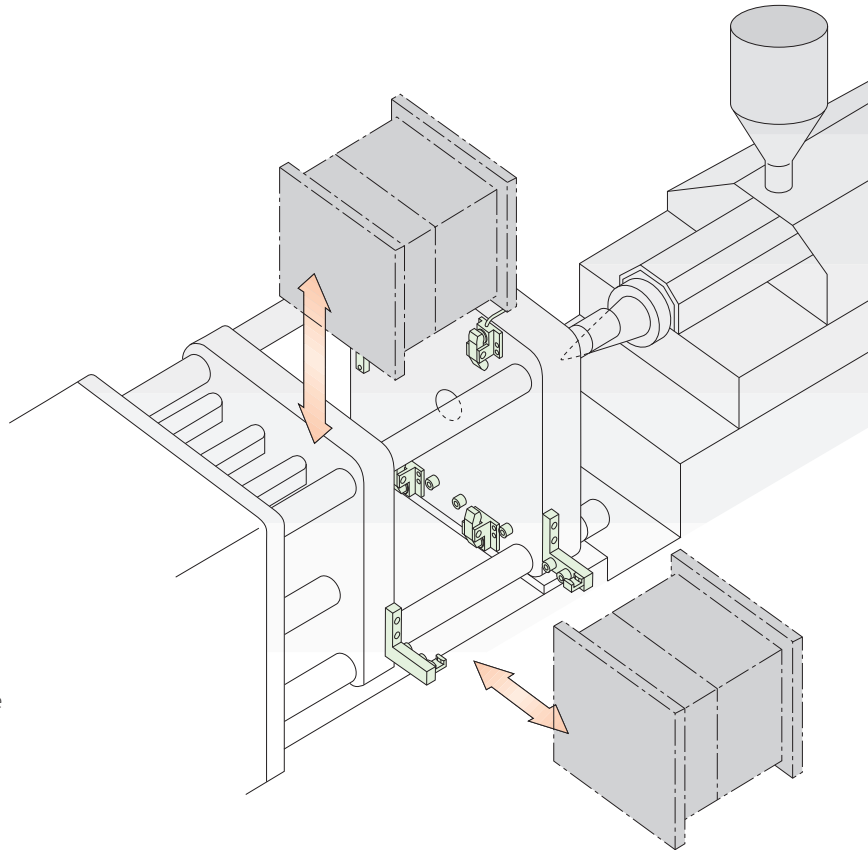
模具水平放入时，一般搭配换模台车，方便和安全，液压夹模器能轻松固定模具。

With a mold change table, hydraulic clamping system can clamp mold easily, more convenient and safer.

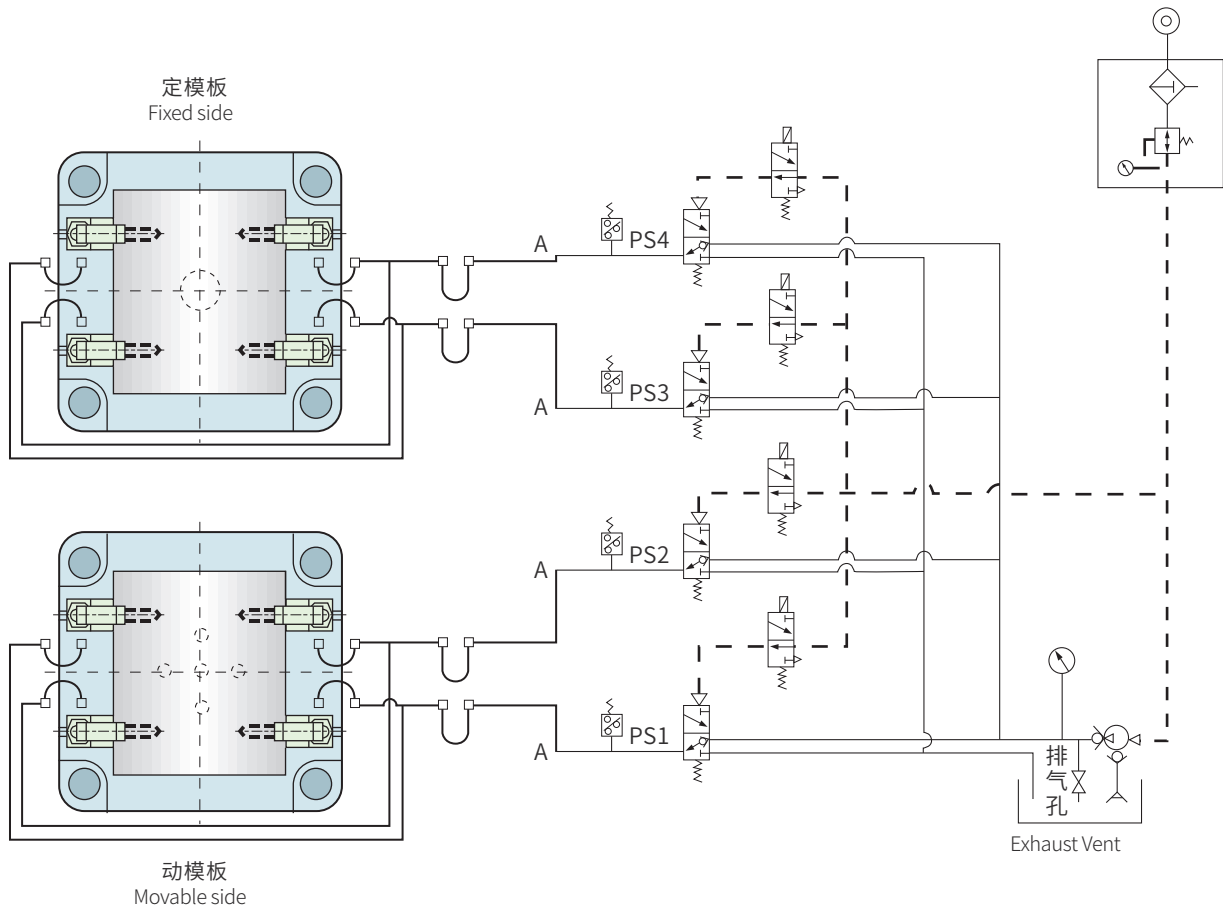
模具垂直放入时 / VERTICAL DIRECTION

传统换模方式，液压夹模系统能减少换模时间和节省人力。

Popular method in mold change, hydraulic clamping system reduce mold change time and save labour.

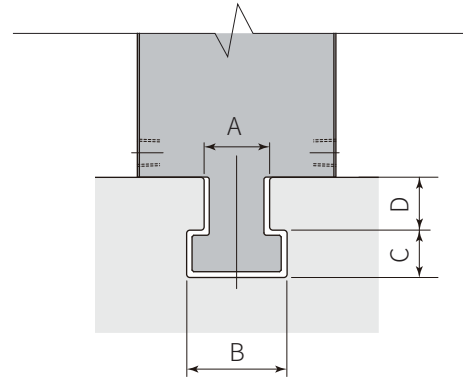
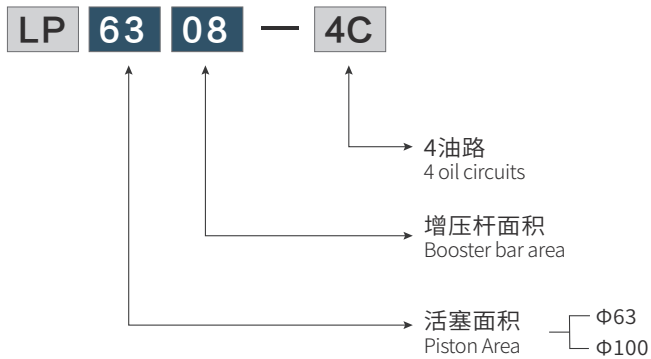


油压系统回路表 / HYDRAULIC SCHEMATIC



气动泵组合型号规则 / AIR-DRIVEN HYDRAULIC PUMP NAME METHOD

建议T型槽尺寸 / RECOMMENDED T-SLOT DIMENSION



- A、B、C、D尺寸，由设备T型槽尺寸决定。
Size A, B, C, D, determined by the device T-slot size.

选用规范 / SPECIFICATION

吨位 Ton	夹模器 Clamper					气动泵组合 Air-driven Pump Hydraulic System	建议模板厚度 Recommended Mold Plate Thickness		建议T型槽尺寸 Recommended T-slot Dimension			
	活动侧 Moveable Side	数量 Qty	固定侧 Fixed Side	数量 Qty	总夹模力 Clamping Force		活动侧 Moveable Side	固定侧 Fixed Side	A	B	C	D
50-150	TY-2	4	TY-2	4	16TON	LP6308U-4C	35	35	22 ^{+1.0} ₋₀	37 ^{+1.0} ₋₀	16 ^{+1.0} ₋₀	24 ^{+0.25} _{-0.25}
160-280	TY-4	4	TY-4	4	32TON	LP6308U-4C	40	40	28 ^{+1.0} ₋₀	48 ^{+1.0} ₋₀	20 ^{+1.0} ₋₀	28 ^{+0.25} _{-0.25}
300-350	TY-6	4	TY-6	4	48TON							
360-550	TY-10	4	TY-10	4	80TON	LP1014U-4C	50	50	28 ^{+1.0} ₋₀	48 ^{+1.0} ₋₀	23 ^{+1.0} ₋₀	28 ^{+0.25} _{-0.25}
560-850	TY-16	4	TY-16	4	128TON							
860-1300	TY-25	4	TY-25	4	200TON							
1350-1850	TY-25	6	TY-25	6	300TON							
1950-2500	TY-25	8	TY-25	8	400TON	LP1014U-4C	50	50	36 ^{+1.0} ₋₀	56 ^{+1.0} ₋₀	25 ^{+1.0} ₋₀	28 ^{+0.25} _{-0.25}
2550-3100	TY-25	10	TY-25	10	500TON							
3150-3600	TY-25	12	TY-25	12	600TON							

- 备注：建议动、定模的夹紧器回路都采用2回路控制，在2回路控制下（对角夹紧），即使某回路因某种原因导致压力低下，还有另一回路保持压力。

Note: Two circuits method is recommended. With two circuits, if one circuit lost pressure, another one can still can keep pressure.

HC100人机界面 / HUMAN-MACHINE INTERFACE

- 数字式全触控操作面板设计;
Digital touch operation panel.
- 界面操作简捷, 易学易懂, 工作状态一目了然;
Easy operation panel, working status can be read easily.
- 优化设计使换模操作更安全、更便捷;
Optimized design makes operation much safer and more convenient.
- 内置声光报警系统;
Integrated acoustic and optical alarm system.
- 射频卡授权, 便于管理和规范操作。
RFID authorization control for easy management and operation.



宽 Width	高 Height	厚 Thickness
104	160	40

单位/Unit(mm)

C2电控箱/ ELECTRIC CONTROL CABINET

- 模块化设计设计便于维护;
Module design to make maintenance easily.
- 接口丰富方便联机控制;
Plurality of interface makes online control convenient.
- 内置高性能PLC, 系统稳定可靠;
High quality PLC inside makes system stable and reliable.
- 安全模式下的单边换模;
Single side mold change under safe mode.
- 支持欧标 Euromap 70.0/70.1。
Support Euromap 70.0/70.1 interface.



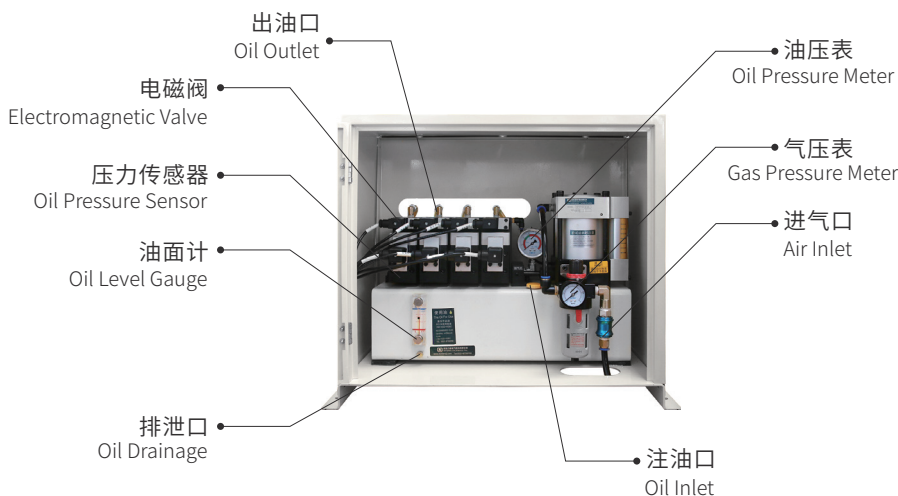
单边换模开关
Single-side Mode Change Switch

宽 Width	高 Height	厚 Thickness
300	350	105

单位/Unit(mm)

气动泵组合 / AIR-DRIVEN PUMP SYSTEM

- 在平衡状态下完全不消耗气压, 不存在电动油泵的动力损失及油温上升问题;
No air consumption at steady state, so no power loss and oil temperature rise.
- 对于回路内的漏油会迅速反应而进行压力补偿, 不会出现油压力(夹紧力)低下;
Auto pressure compensation in case of oil leak to prevent pressure from decreasing.
- 气压驱动、超小型、高性能油泵;
Air-driven, ultra-small, high performance oil pump.
- 外置保护箱体, 使用寿命更长。
Shield case makes longer work life.

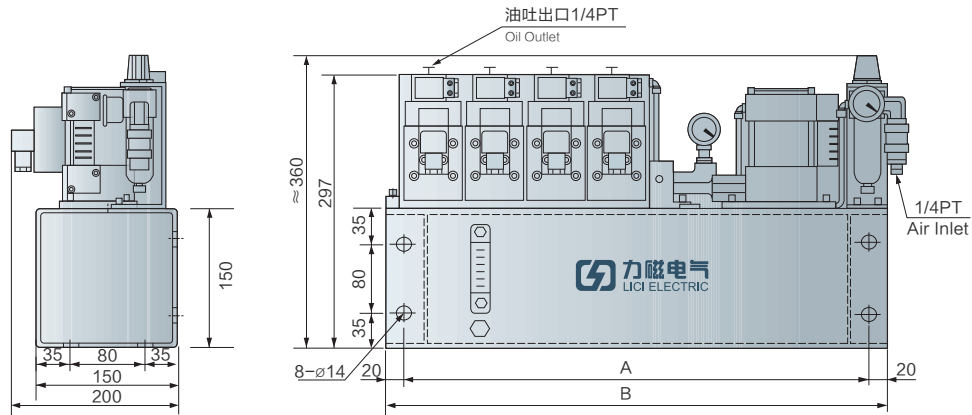


宽 Width	高 Height	厚 Thickness
610	510	310

单位/Unit(mm)

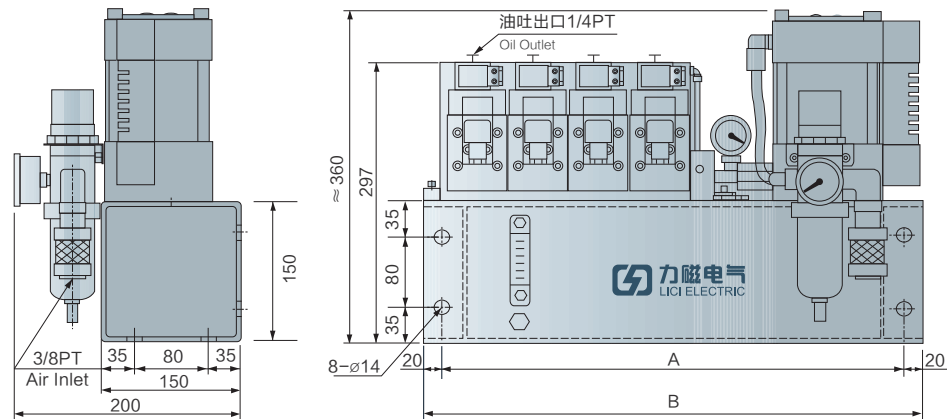
气动泵组合外型尺寸 / AIR-DRIVEN PUMP SYSTEM DIMENSION

型号/Model : LP6308U PUMP



型号 Model	回路数 No. of Circuits	A	B	油箱全容量 (l) Total Capacity	可用容量 (l) Available Capacity	重量Weight (Kg)	使用油 Oil Type
LP6308U	4	493	533	9	7.1	43	普通矿物油基液压油 (相当于ISO-VG32) Mineral Pressure Oil

型号/Model : LP1014U PUMP



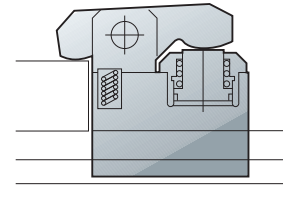
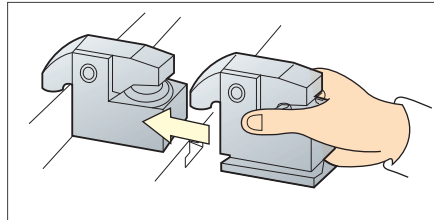
型号 Model	回路数 No. of Circuits	A	B	油箱全容量 (l) Total Capacity	可用容量 (l) Available Capacity	重量Weight (Kg)	使用油 Oil Type
LP1014U	4	493	533	9	5.8	50	普通矿物油基液压油 (相当于ISO-VG32) Mineral Pressure Oil

TY夹模器 / TY CLAMPER

- 此型夹模器以杠杆原理作用, 因此有更广泛的适用范围。
With lever principle, TY clamper has wide application.

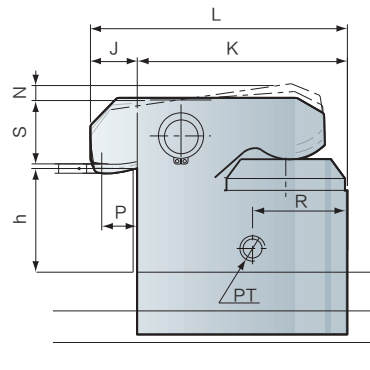
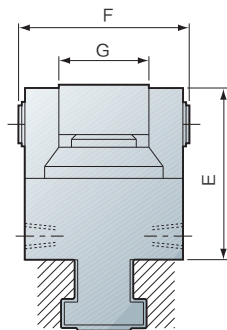


夹模器
Clamper



结构剖面/Section View

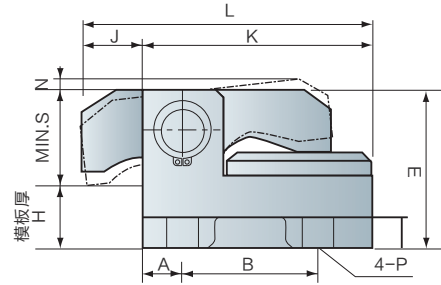
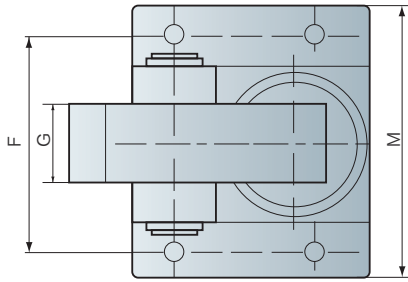
TY夹模器外型尺寸 / TY CLAMPER DIMENSION



型号 Model	MIN.E	F	G	J	K	L	MAX.N	P	R	MIN.S	PT
TY-2	59	65	28	22	85	107	10	12.5	48	27	1/8
TY-4	85	87	40	30	120	150	10	16	58	33	1/4
TY-6	94	97	44	34.5	133	167.5	11	20	68	40	1/4
TY-10	105	110	50	30	165	195	11	20	82	53	1/4
TY-16	120	125	60	35	200	235	12	20	96	67	1/4
TY-25	133	155	73	35	240	275	13	20	110	81	1/4

- 注: 模沿厚度(h)及T槽(A.B.C.D.)尺寸如为既有(特殊)尺寸, 请于订购时确认之;
Note: Please confirm all size of h and A, B, C and D.
- 适用于T型槽墙板。
Suitable for T-groove wallboard.

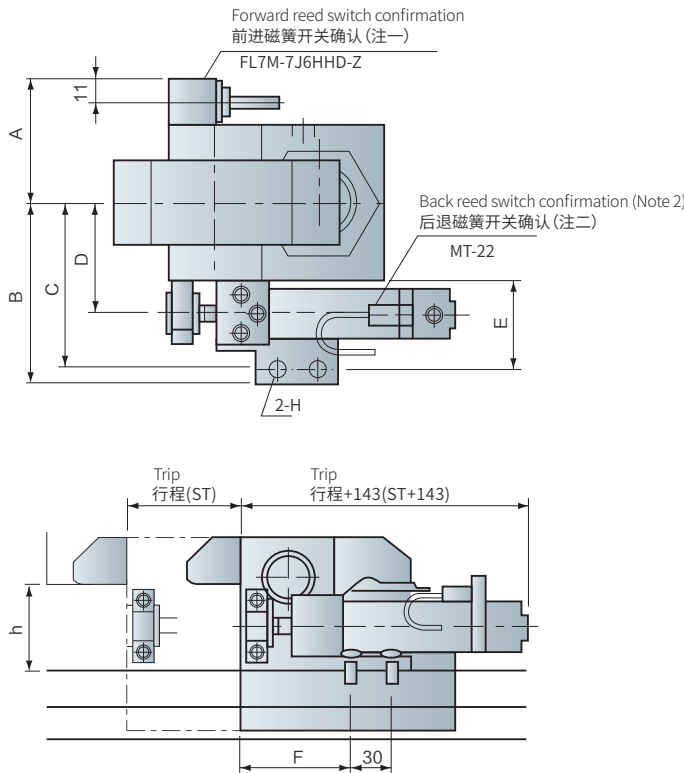
TY-B型夹模器外型尺寸 / TY-B CLAMPER DIMENSION



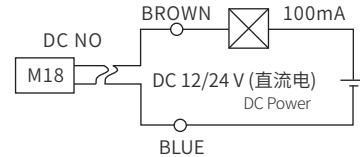
型号 Model	A	B	C	MIN.E	MIN.F	G	MIN.M	J	K	L	N	MIN.S	P
TY-2B	25	50	27	59	104	28	130	22	85	107	10	27	M10X25L 螺丝 Screw
TY-4B	25	50	35	85	141	40	171	30	120	150	10	32	M16X40L 螺丝 Screw
TY-6B	25	83	40	94	144	44	176	34.5	133	167.5	11	40	M16X40L 螺丝 Screw
TY-10B	25	115	55	105	171	50	221	30	165	195	11	53	M20X50L 螺丝 Screw

- 注: 适用于螺丝孔墙板。
Note: Suitable for screw hole wallboard.

TY-C型夹模器外型尺寸 / TY-C CLAMPER DIMENSION

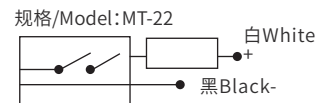


- 注一: 前进磁簧开关接线图
Note 1: Forward reed switch wiring diagram.



规格/Model: FL7M-7J6HHD-Z

- 注二: 后退磁簧开关接线图
Note 2: Back reed switch wiring diagram.



- 规格/Model: MT-22
- | | |
|-----------------------|----------------------------|
| 1. 使用范围 / Application | 2. 最大负载流量 / Max. Flow Load |
| AC 4-240V | 50~100mA |
| DC | 3. 输出形式 NO./NO. |

	A	B	C	D	E	F	G	H (螺丝: 台盘攻牙深度) H (screw: plate depth)	气缸规格 Air Cylinder
TY-2C	51	93	86	54	57	82	22	M10X25L:Φ8.6钻x25深	MB32*行程 Stroke
TY-4C	62	104	97	65	57	82	30	M10X25L:Φ8.6钻x25深	MB32*行程 Stroke
TY-6C	67	127	115	75	70	85	34.5	M10X25L:Φ8.6钻x25深	MB40*行程 Stroke
TY-10C	77	132	120	80	70	85	30	M10X25L:Φ8.6钻x25深	MB40*行程 Stroke
TY-16C	82	142	130	90	70	85	35	M10X25L:Φ8.6钻x25深	MB40*行程 Stroke
TY-25C	92	152	140	100	70	85	35	M10X25L:Φ8.6钻x25深	MB40*行程 Stroke
TY-50C	132	212.5	200.5	150	90.5	87	35	M12X25L:Φ10.3钻x25深	MB63*行程 Stroke



青岛力磁电气股份有限公司
Qingdao Lici Electric Inc.

注塑机、冲压机以及机加工快速换模系统整体解决方案的专业提供商，是磁力装夹与起重搬运的技术应用专家，也是磁力行业技术领先的高新技术企业。

子公司分布：青岛、台湾、重庆、宁波、苏州、东莞、大连、武汉、天津、长春、常州、上海、厦门、成都

Qingdao Lici Electric Inc. is a professional provider of total QMCS solution in injection molding machine and punching machine, an expert of magnetic application in workpiece clamping and lifting, also a technology leading company in magnetism industry.

Subsidiary Distribution: Qingdao, Taiwan, Chongqing, Ningbo, Suzhou, Dongguan, Dalian, Wuhan, Tianjin, Changchun, Changzhou, Shanghai, Xiamen, Chengdu



A: 青岛市城阳区春阳路88号天安数码城27号楼
27th Building, No.88, Chunyang Road, TianAn Cyber, Qingdao, China
T: +86-532-87769769 F: +86-532-87769216
W: www.licidianqi.com E: sales@licidianqi.com